

This drawing and the material appearing herein, constitute the original and unpublished work of Feinknopf Macioce Schappa Architects, Inc. and may not be used on any project for any purpose, nor may the same be copied (except by those governmental agencies required by law), or disclosed without written consent of the architect.

© COPYRIGHT FEINKNOPF MACIOCE SCHAPPA, ARCHITECTS, INC. 1996.

PROJECT #	95-062-03	PROJECT MANAGER	DLAB
DATE	8-5-1996	DRAWN BY	HMP
SCALE	AS NOTED (U)	REVIEWED BY	DLAB

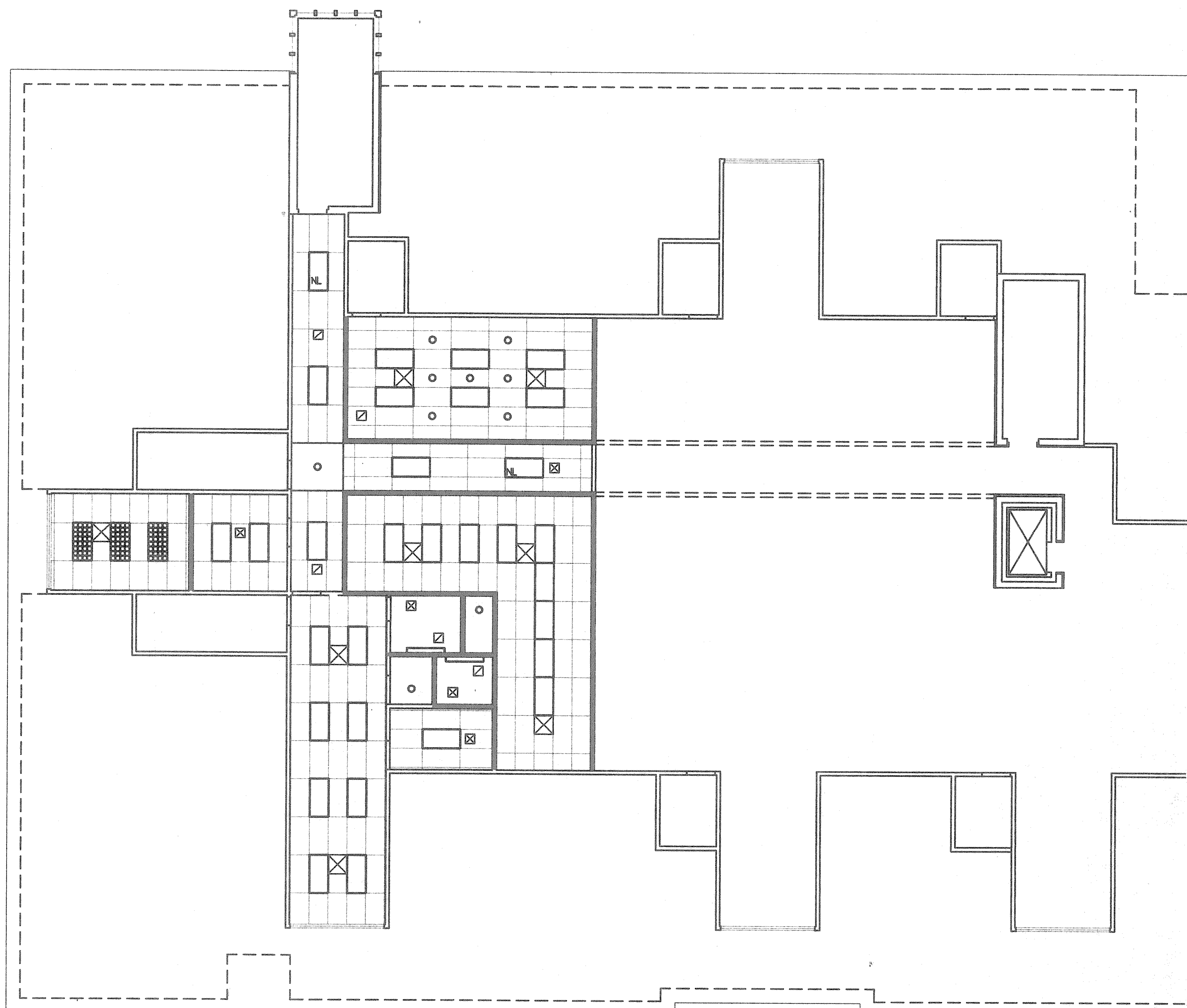
NOTES

GENERAL NOTES:

- ALL SUSPENDED LAY-IN CEILING ARE TO BE 6'-0" ABOVE FINISHED FLOOR UNLESS NOTED OTHERWISE.
- ALL GYPSUMBOARD CEILING ARE TO BE 1'-6" ABOVE FINISHED FLOOR UNLESS NOTED OTHERWISE.
- ALL GYPSUMBOARD SCOTTS AND HEADERS AT FRAMED OPENINGS ARE TO BE 6'-10" ABOVE FINISHED FLOOR.
- REFER TO ELECTRICAL DRAWINGS FOR LIGHT FIXTURE SCHEDULE, UNLESS OTHERWISE SPECIFIED, THE FINISHED SURFACES OF LIGHT FIXTURES ARE TO MATCH AS CLOSELY AS POSSIBLE, ADJACENT ARCHITECTURAL FIXTURES.
- REFER TO HVAC DRAWINGS FOR DIFFUSER, REGISTER, AND GRILLE SCHEDULE WHEN DEVICES ARE LOCATED IN A WALL OR CEILING WITH A PAINTED FINISH, THEY ARE TO BE PAINTED TO MATCH THE ADJACENT FINISH.
- MECHANICAL, ELECTRICAL, AND FIRE PROTECTION CONTRACTORS ARE TO COORDINATE EQUIPMENT/DEVICE LOCATIONS WITH CEILING CONTRACTOR PRIOR TO COMMENCING CONSTRUCTION.
- PARTITIONS SHOWN SHADED ON THE REFLECTED CEILING PLAN ARE TO RECEIVE 2 1/2" FIBERGLASS SOUND ATTENUATION INSULATION BETWEEN STUDS, FOR THE FULL HEIGHT OF THE PARTITION AND ARE TO EXTEND TO 6" ABOVE THE CEILING AND ARE TO RECEIVE A BLANKET OF 3 1/2" FIBERGLASS SOUND ATTENUATION INSULATION THAT LAPS OVER THE PARTITION AND EXTENDS 2'-0" BEYOND BOTH SIDES OF THE PARTITION ABOVE THE CEILING.
- RESTROOMS ARE TO HAVE WALL-MOUNTED FLUORESCENT LIGHT FIXTURES CENTERED ABOVE MIRROR.

LIGHT FIXTURE LEGEND:

- 2 x 4 LAY-IN FLUORESCENT FIXTURE, 3-TUBE, WITH PARABOLIC LOUVER
- RECESSED INCANDESCENT DOWNLIGHT, E0 U LAMP
- 4'-0" LONG WALL-MOUNTED FIXTURE, 1'-0" AFF.
- TWO-TUBE FLUORESCENT LIGHT FIXTURE, MOUNTED BENEATH WALL CABINETS
- NIGHT LIGHT
- DECORATIVE WALL SCONCE
- 2 x 4 LAY-IN FLUORESCENT FIXTURE, 3-TUBE, WITH PRISMATIC ACRYLIC LENS



2 ADDED DIFFUSERS AND REGISTERS TO SHEETS A3 & A4 12-10-1996

1 REVISION 11-9-1996

**FEINKNOPF
MACIOCE
SCHAPPA
Architects, Inc.**

274 Marwood Boulevard, Columbus, Ohio 43215
tele (614) 321-8192 fax (614) 321-5601

Proposed Office for
Columbus Oncology Associates, Inc.
810 Jasonway Avenue
Columbus, Ohio

SECOND FLOOR
REFLECTED CEILING PLAN **A-4**

