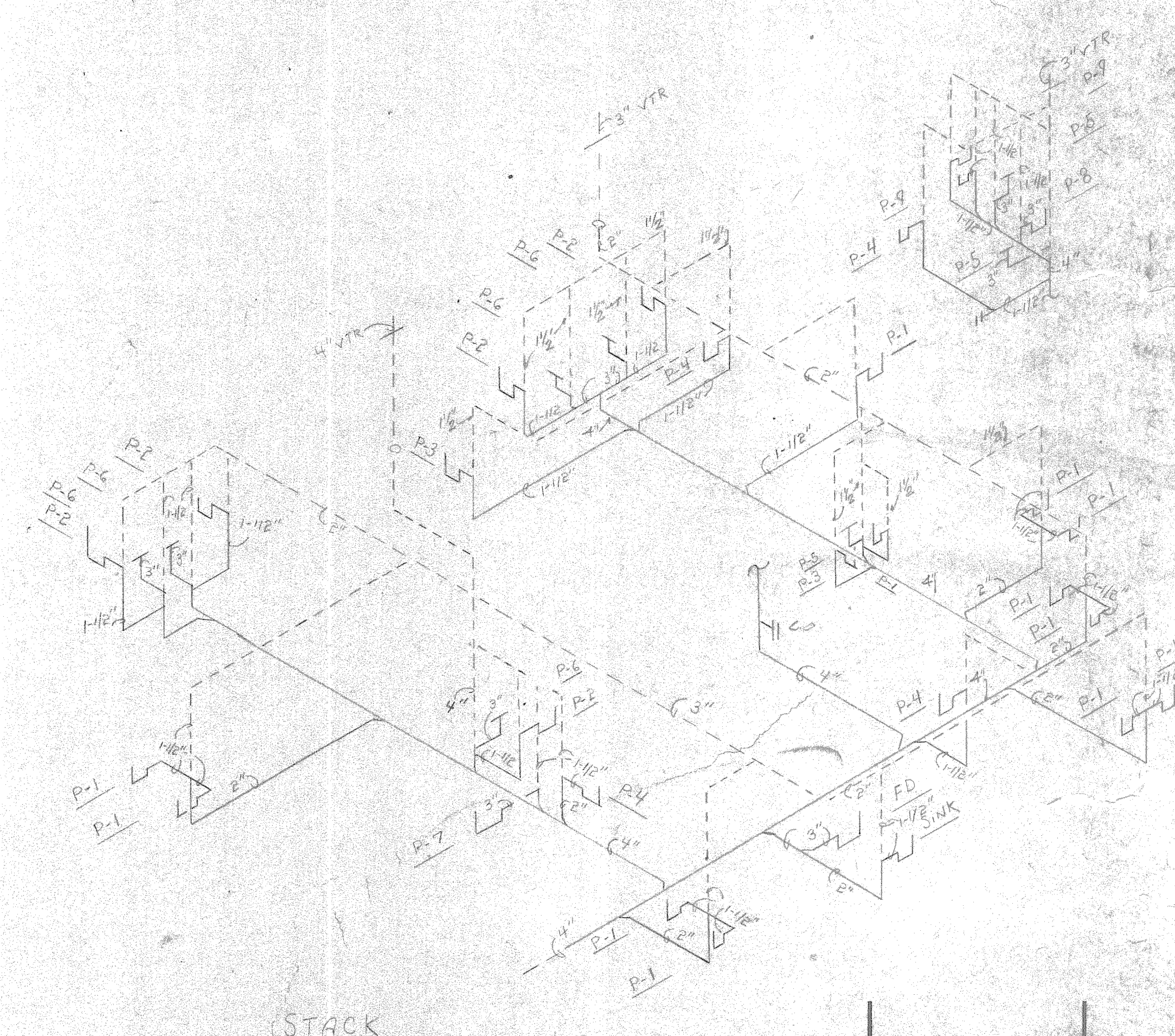
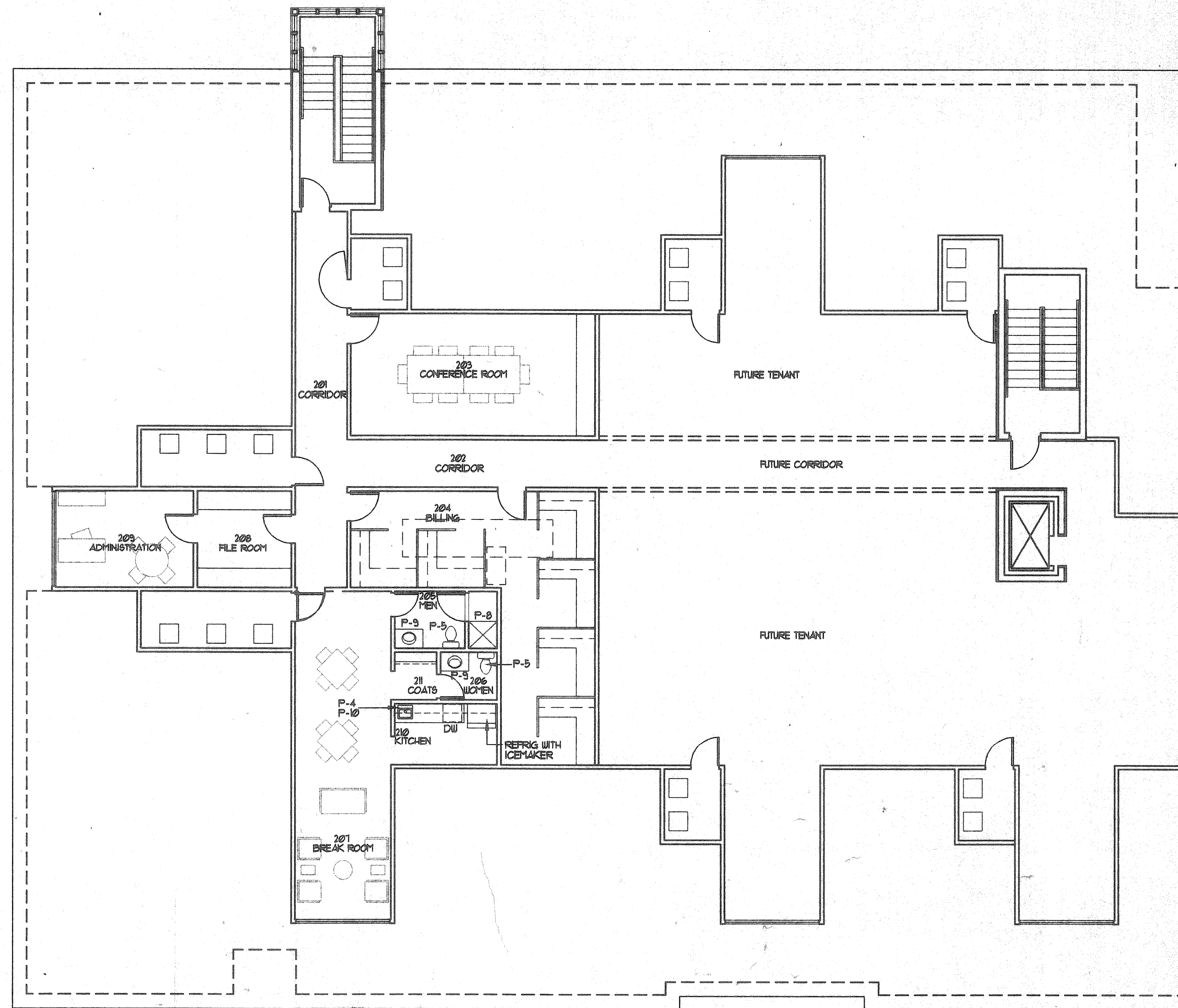


This drawing and the material appearing herein, constitute the original and unpublished work of Feinknopf Macioce Schappa Architects, Inc. and may not be used on any project for any purpose, nor may the same be copied (except by those governmental agencies required by law), or disclosed without written consent of the architect.

© COPYRIGHT FEINKNOPF MACIOCE SCHAPPA ARCHITECTS, INC. 1996

| PLUMBING FIXTURE SCHEDULE | | | |
|---------------------------|-------------------|----------------------------------|--|
| MARK | MFR | CATALOG NO. | DESCRIPTION |
| P-1 | ELKAY | LR-1720 | 17' L x 20' W x 1 1/2" D 3-HOLE STAINLESS-STEEL COUNTERTOP SINK WITH GOOSENECK FAUCET WITH WRIST BLADE HANDLES |
| P-2 | AMERICAN STANDARD | 941011 | VITREOUS CHINA WHEELCHAIR USER WALL-MOUNTED LAVATORY WITH GOOSENECK FAUCET WITH WRIST BLADE HANDLES |
| P-3 | AMERICAN STANDARD | 0795-013 | 20" x 19" VITREOUS CHINA WALL-MOUNTED LAVATORY WITH GOOSENECK FAUCET WITH WRIST BLADE HANDLES |
| P-4 | ELKAY | DLR-2522-11 | 25' L x 22' W x 0" D, 3-HOLE STAINLESS-STEEL COUNTERTOP SINK WITH GOOSENECK FAUCET WITH WRIST BLADE HANDLES. IN ROOM 142, PROVIDE 4-HOLE SINK FOR CONNECTION TO TENANT-FURNISHED EYE WASH. |
| P-5 | AMERICAN STANDARD | 2816-035 | VITREOUS CHINA FLOOR-MOUNTED TANK-TYPE WATER CLOSET. |
| P-6 | AMERICAN STANDARD | 2100-406 | VITREOUS CHINA FLOOR-MOUNTED TANK-TYPE WATER CLOSET, WITH 1 1/4" SEAT FOR ADA COMPLIANCE. |
| P-7 | AMERICAN STANDARD | T141200(SINK) 834411(FAUCET) | 28" x 28" x 13" D ENAMELED CAST IRON FLOOR-MOUNTED SERVICE SINK |
| P-8 | AMERICAN STANDARD | 3636-6T 3636-6U | 36" x 36" ACRYLIC SHOWER BASE WITH ACRYLIC SHOWER WALLS FOR ALCOVE INSTALLATION. PROVIDE CHROME-FINISHED SHOWER CURTAIN ROD. |
| P-9 | AMERICAN STANDARD | 0415-021(LAV) 4801962(FAUCET) | 20" x 11" VITREOUS CHINA COUNTERTOP LAVATORY |
| P-10 | GENERAL ELECTRIC | GFC-800R | 1/2 HP. WASTE DISPOSAL |

| | | | |
|-------------|--------------|--------------|------|
| PROJECT NO. | 98-061-03 | PROJECT NAME | CLAB |
| DATE | 11-8-1996 | DESIGNED BY | MMF |
| SCALE | AS NOTED (1) | INTERVIEW BY | DLMS |
| NO. 0000 | | | |

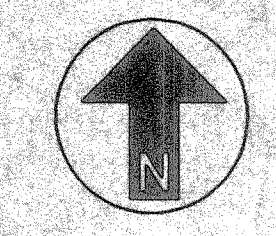


**FEINKNOPF
MACIOCE
SCHAPPA
Architects, Inc.**

274 Memorial Boulevard, Columbus, Ohio 43215
Tel: (614) 291-9192 Fax: (614) 291-9601



Proposed Office for
Columbus Oncology Associates, Inc.
810 Jasonway Avenue
Columbus, Ohio



SECOND FLOOR
PLUMBING PLAN

P-2