

DOOR SCHEDULE										
DOOR	MARK	DOOR WIDTH	HEIGHT	THICKNESS	MATERIAL	ELEVATION	HEAD	JAMBS	MATERIAL	REMARKS
A	A	3'-0"	6'-8"	1 3/4"	SCUD	A	1/A-1	1,2/A-1	H-M	
B	B	3'-0"	6'-8"	1 3/4"	SCUD	A	1/A-1	1/A-1	H-M	
C	C	3'-0"	6'-8"	1 3/4"	SCUD	A	1/A-1	1/A-1	H-M	
D	D	3'-0"	6'-8"	1 3/4"	SCUD	A	1/A-1	1/A-1	H-M	
E	E	3'-0"	6'-8"	1 3/4"	SCUD	A	1/A-1	1/A-1	H-M	POCKET DOOR
F	F	3'-6"	6'-8"	1 3/4"	SCUD	A	1/A-1	1/A-1	H-M	LEAD-LINED DOOR & FRAME
G	G	3'-0"	6'-8"	1 3/4"	SCUD	A	1/A-1	1/A-1	H-M	PROVIDE LIGHT SEAL
H	H	3'-0"	6'-0"		GLASS	A			ALUM.	SQUARER DOOR
J	J	2'-6"	6'-8"	1 3/4"	SCUD	B	1/A-1	1/A-1	H-M	
K	K	3'-0"	6'-8"	1 3/4"	SCUD	B	6/A-1	6/A-1	H-M	
X	X	EXISTING	DOOR	PROVIDE	AS PART	OF BUILDING SHELL				

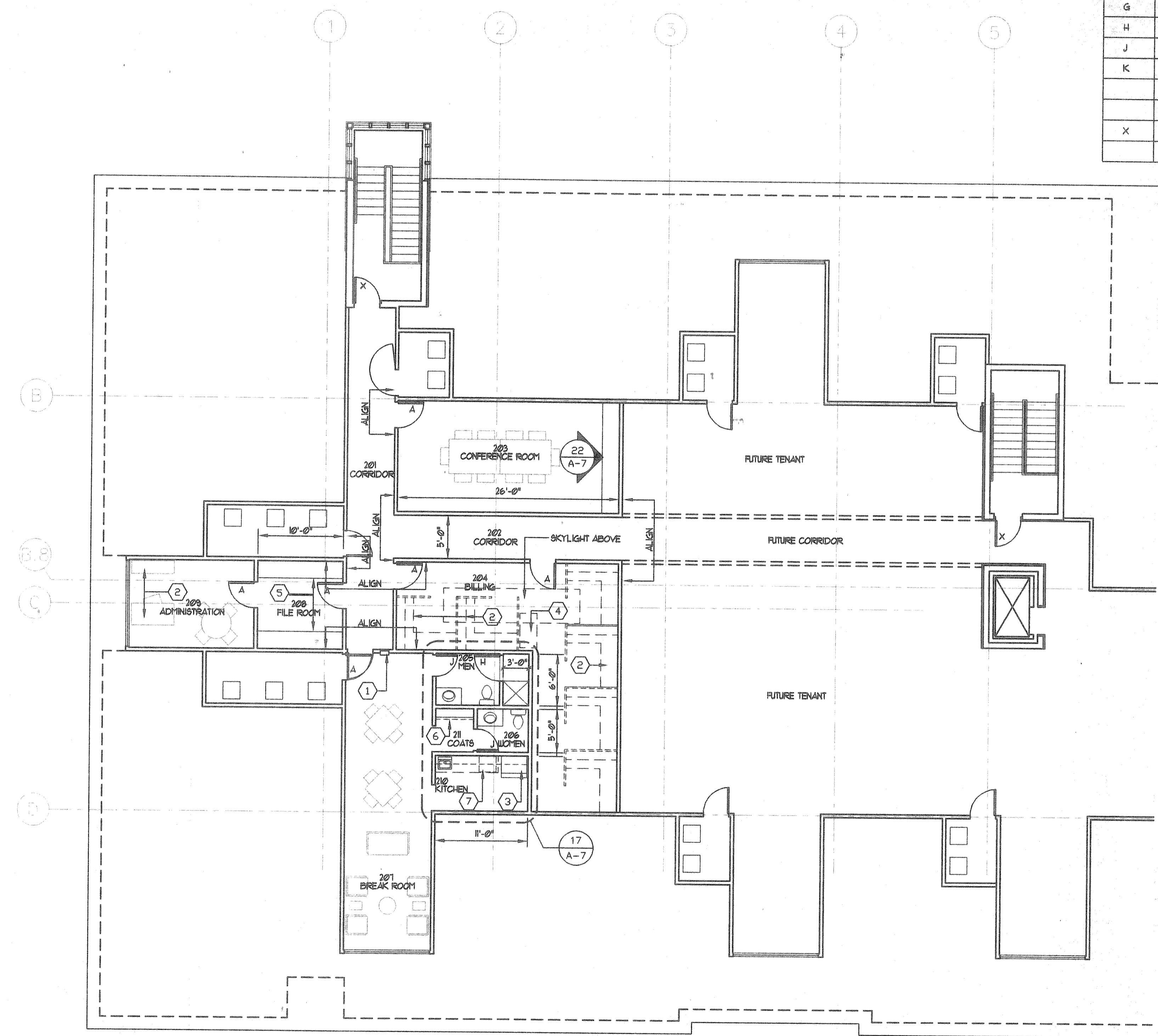
This drawing and the material appearing herein, constitute the original and unpublished work of Feinknopf Macioce Schappa Architects, Inc. and may not be used on any project for any purpose, nor may the same be copied (except by those governmental agencies required by law), or disclosed without written consent of the architect.

© COPYRIGHT FEINKNOPF MACIOCE SCHAPPA, ARCHITECTS, INC. 1996

PROJECT # 95067-03 PROJECT MANAGER DLAB
 DATE 11-8-1996 DRAWN BY HHP
 SCALE AS NOTED (1) REVIEWED BY DLAB

NOTES

- CODED NOTES:**
- ① FIRE EXTINGUISHER IN RECESSED CABINET
 - ② WORKSTATIONS, FURNISHED AND INSTALLED BY TENANT UNDER SEPARATE CONTRACT.
 - ③ REFRIGERATOR, FURNISHED AND INSTALLED BY TENANT
 - ④ COPIER, FURNISHED AND INSTALLED BY TENANT
 - ⑤ FILE CABINETS, FURNISHED AND INSTALLED BY TENANT
 - ⑥ ADJUSTABLE CLOSET ROD WITH SHELF
 - ⑦ DISHWASHER, FURNISHED BY TENANT AND INSTALLED BY CONTRACTOR



NO.	REVISION	DATE

**FEINKNOPF
MACIOCE
SCHAPPA
Architects, Inc.**

274 Marconi Boulevard, Columbus, Ohio 43215
 tele (614) 231-5198 fax (614) 231-5601

Proposed Office for
 Columbus Oncology Associates, Inc.
 810 Jasonway Avenue
 Columbus, Ohio

