

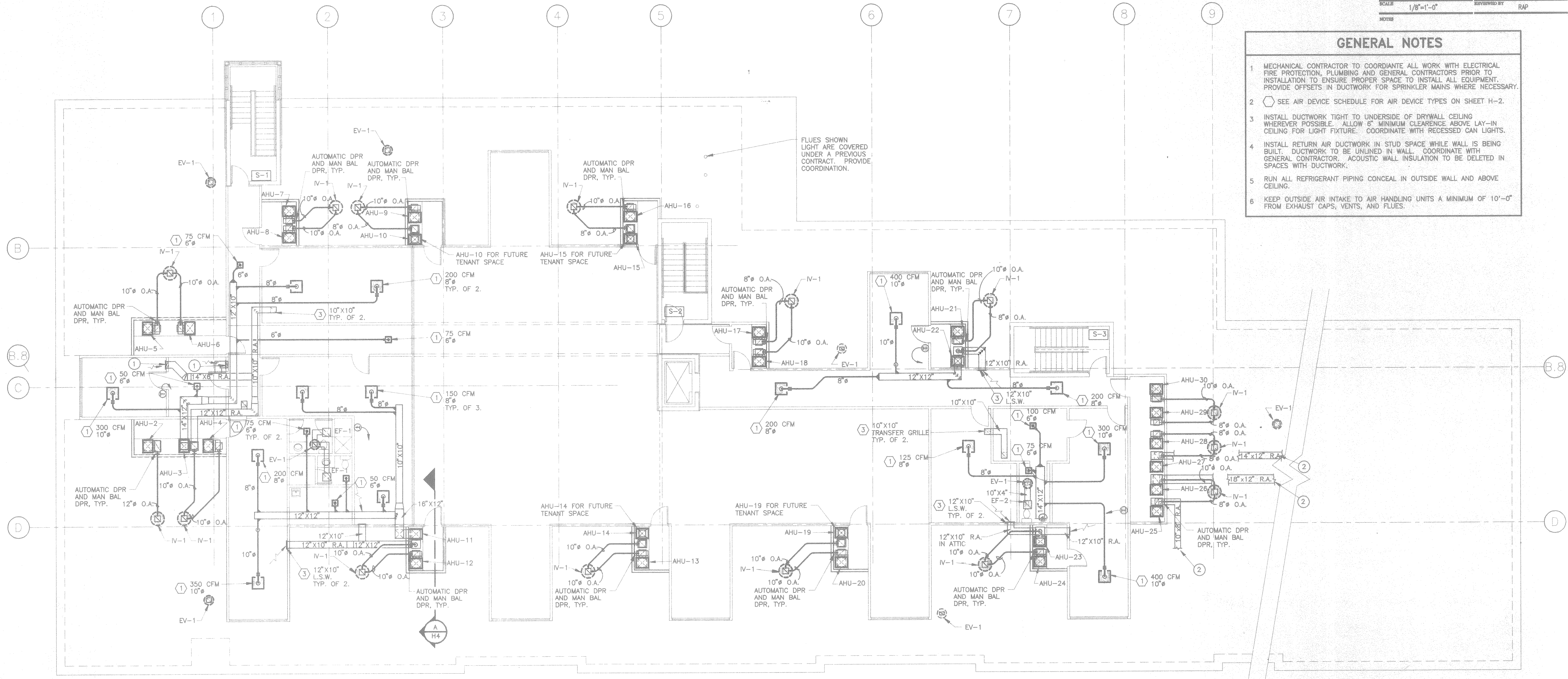
This drawing and the material appearing herein, constitute the original and unpublished work of Feinknopf Macioce Schappa Architects, Inc. and may not be used on any project for any purpose, nor may the same be copied (except by those governmental agencies required by law), or disclosed without written consent of the architect.

© COPYRIGHT FEINKNOPF MACIOCE SCHAPPA, ARCHITECTS, INC.

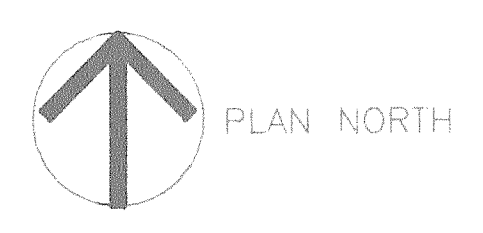
PROJECT #	95062-01	PROJECT MANAGER	RAP
DATE	11-27-1995	DRAWN BY	WFS
SCALE	1/8"=1'-0"	REVIEWED BY	RAP
NOTES			

GENERAL NOTES

- MECHANICAL CONTRACTOR TO COORDINATE ALL WORK WITH ELECTRICAL FIRE PROTECTION, PLUMBING AND GENERAL CONTRACTORS PRIOR TO INSTALLATION TO ENSURE PROPER SPACE TO INSTALL ALL EQUIPMENT. PROVIDE OFFSETS IN DUCTWORK FOR SPRINKLER MAINS WHERE NECESSARY.
- SEE AIR DEVICE SCHEDULE FOR AIR DEVICE TYPES ON SHEET H-2.
- INSTALL DUCTWORK TIGHT TO UNDERSIDE OF DRYWALL CEILING WHEREVER POSSIBLE. ALLOW 6" MINIMUM CLEARANCE ABOVE LAY-IN CEILING FOR LIGHT FIXTURE. COORDINATE WITH RECESSED CAN LIGHTS.
- INSTALL RETURN AIR DUCTWORK IN STUD SPACE WHILE WALL IS BEING BUILT. DUCTWORK TO BE UNLINED IN WALL. COORDINATE WITH GENERAL CONTRACTOR. ACOUSTIC WALL INSULATION TO BE DELETED IN SPACES WITH DUCTWORK.
- RUN ALL REFRIGERANT PIPING CONCEAL IN OUTSIDE WALL AND ABOVE CEILING.
- KEEP OUTSIDE AIR INTAKE TO AIR HANDLING UNITS A MINIMUM OF 10'-0" FROM EXHAUST CAPS, VENTS, AND FLUES.



SECOND FLOOR HVAC PLAN
1/8" = 1'-0"



CODED NOTES

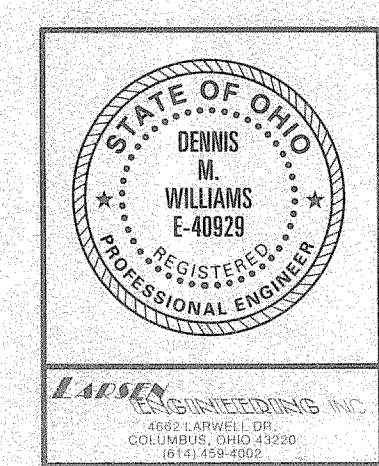
- ④ 14" x 10" AIR DEVICE MOUNTED LOW SIDE WALL, RUN 14" x 3-1/2" UNLINED RETURN AIR DUCT FROM MAIN RETURN AIR DUCT TO WALL. RUN DOWN IN STUD SPACE TO AIR DEVICE.
- ② SEE SHEET H-2 FOR CONTINUATION OF DUCTWORK.

NO.	REVISION DESCRIPTION	DATE

**FEINKNOPF
MACIOCE
SCHAPPA
Architects, Inc.**

274 Maroon Boulevard, Columbus, Ohio 43215
tele (614) 221-3192 fax (614) 221-5601

Proposed Office for
Columbus Oncology Associates, Inc.
& Central Ohio Internal Medicine
810 Jasonway Avenue
Columbus, Ohio



SECOND FLOOR HVAC
PLAN **H-3**