

This drawing and the material appearing herein, constitute the original and unpublished work of Feinknopf Macioce Schappa Architects, Inc. and may not be used on any project for any purpose, nor may the same be copied (except by those governmental agencies required by law), or disclosed without written consent of the architect.

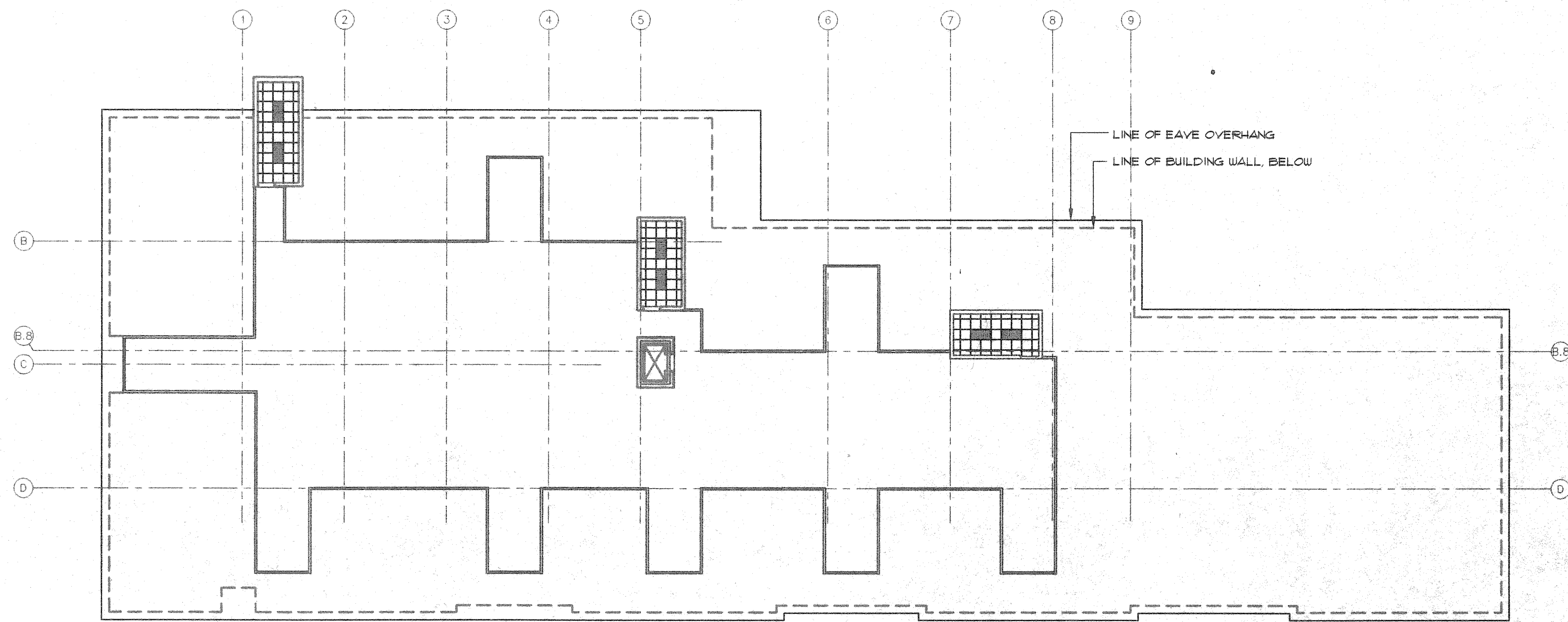
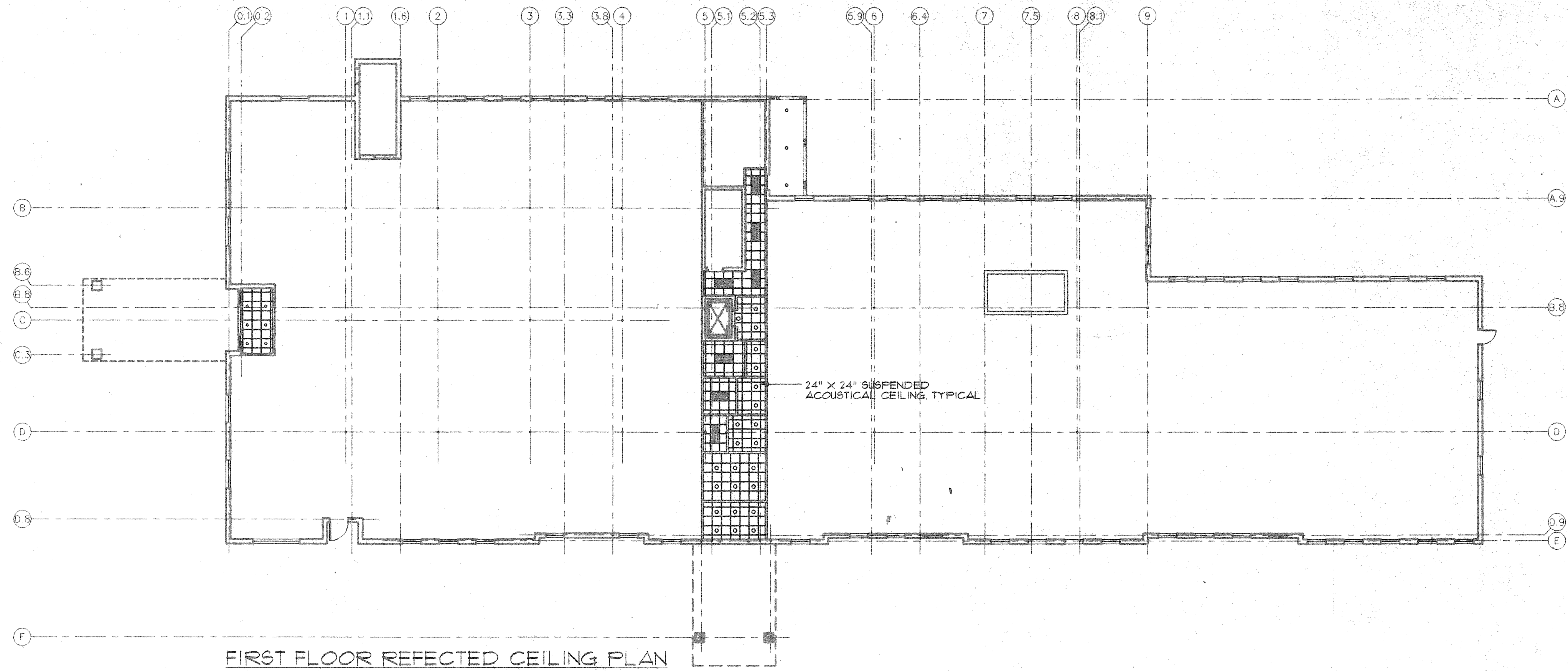
© COPYRIGHT FEINKNOPF MACIOCE SCHAPPA, ARCHITECTS, INC. 1996

PROJECT #	95062-01	PROJECT MANAGER	DLAB
DATE	7-1-1996	DRAWN BY	MMP
SCALE	1/16" = 1'-0"	REVIEWED BY	DLAB

NOTES

GENERAL NOTES:

- REFER TO ELECTRICAL DRAWINGS FOR LK FIXTURE SCHEDULE, UNLESS OTHERWISE NOTED. THE FINISHED SURFACES OF LIGHT FIXTURES ARE TO MATCH ADJACENT ARCHITECTURAL FINISHES. WHERE ADJACENT ARCHITECTURAL FINISHES ARE PAINTED, THOSE LIGHT FIXTURES WITH ONLY PAINTED FINISHES ARE TO RECEIVE A FINISH COAT OF PAINT TO MATCH THE COLOR OF THE ARCHITECTURAL FINISH.
- REFER TO HYAC DRAWINGS FOR DIFFUSER, REGISTER AND GRILLE SCHEDULE, UNLESS OTHERWISE NOTED. DIFFUSERS, REGISTERS AND GRILLES ARE TO BE PAINTED TO MATCH ADJACENT ARCHITECTURAL FINISHES.
- MECHANICAL, FIRE PROTECTION AND ELECTRICAL CONTRACTORS ARE TO COORDINATE EQUIPMENT LOCATIONS WITH CEILING CONTRACTOR PRIOR TO COMMENCING CONSTRUCTION.



SECOND FLOOR REFLECTED CEILING PLAN

NO.	REVISION DESCRIPTION	DATE
FEINKNOPF MACIOCE SCHAPPA Architects, Inc.		
274 Marconi Boulevard, Columbus, Ohio 43215 tele (614) 221-5192 fax (614) 221-5601		
JOB		

JASONWAY MEDICAL
OFFICE BUILDING

SHEET TITLE	SHEET NO.
REFLECTED CEILING PLANS	A-2

