

This drawing and the material appearing herein, constitute the original and unpublished work of Feinknopf Macioce Schappa Architects, Inc. and may not be used on any project for any purpose, nor may the same be copied (except by those governmental agencies required by law), or disclosed without written consent of the architect.

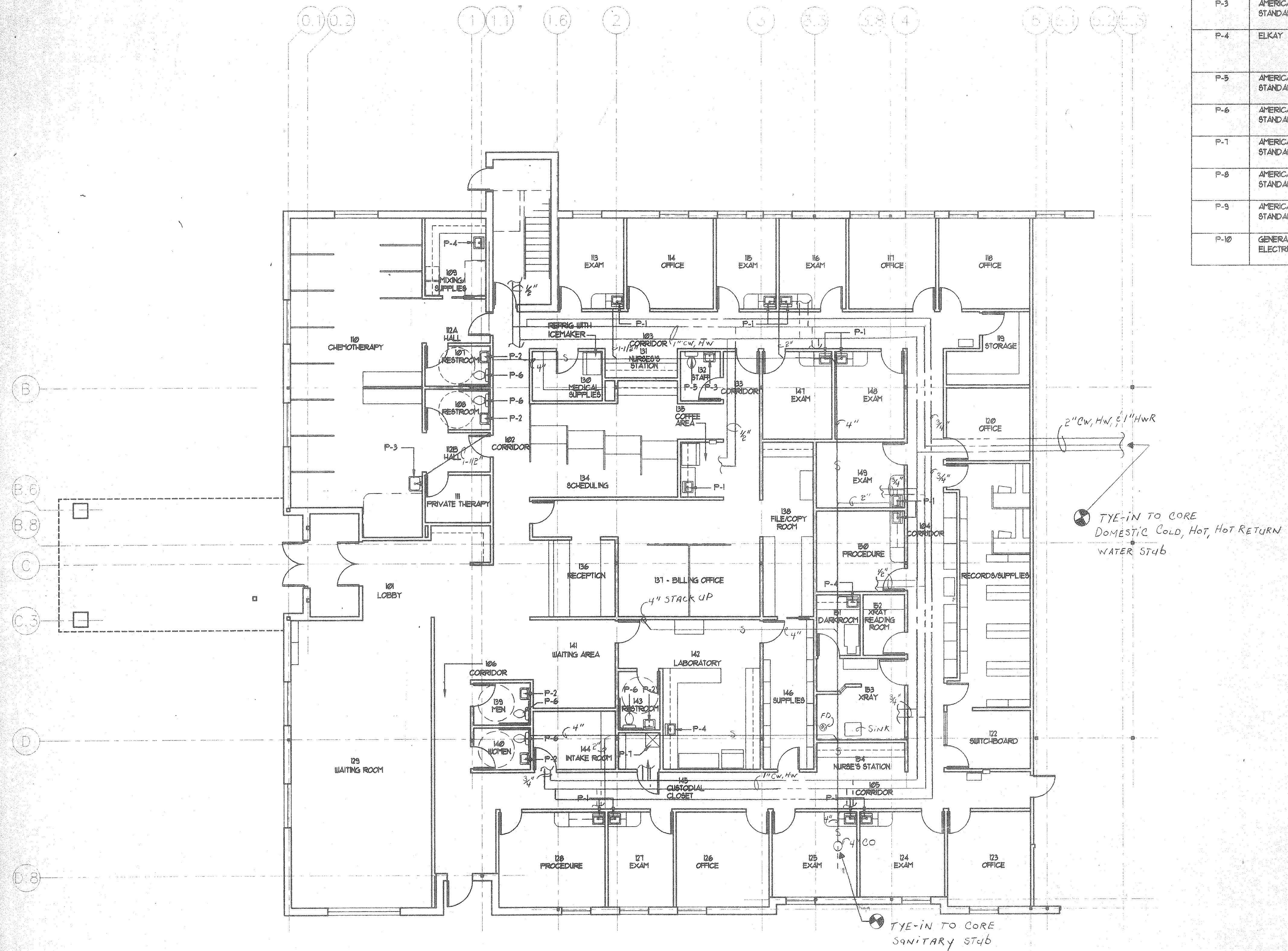
© COPYRIGHT FEINKNOPF MACIOCE SCHAPPA, ARCHITECTS, INC. 1996.

**PLUMBING FIXTURE SCHEDULE**

MARK	MFR	CATALOG NO.	DESCRIPTION
P-1	ELKAY	LR-1120	17" L x 20" W x 1 1/2" d, 3-HOLE STAINLESS-STEEL COUNTERTOP SINK WITH GOOSENECK FAUCET WITH WRIST BLADE HANDLES
P-2	AMERICAN STANDARD	914011	VITREOUS CHINA WHEELCHAIR USER WALL-MOUNTED LABORATORY WITH GOOSENECK FAUCET WITH WRIST BLADE HANDLES
P-3	AMERICAN STANDARD	0125073	20" x 18" VITREOUS CHINA WALL-MOUNTED LABORATORY WITH GOOSENECK FAUCET WITH WRIST BLADE HANDLES
P-4	ELKAY	DLR-2522-12	25" L x 22" W x 12" D, 3-HOLE STAINLESS-STEEL COUNTERTOP SINK WITH GOOSENECK FAUCET WITH WRIST BLADE HANDLES. IN ROOM 142, PROVIDE 4-HOLE SINK FOR CONNECTION TO TENANT-FURNISHED EYE WASH.
P-5	AMERICAN STANDARD	2816035	VITREOUS CHINA FLOOR-MOUNTED TANK-TYPE WATER CLOSET.
P-6	AMERICAN STANDARD	2102406	VITREOUS CHINA FLOOR-MOUNTED TANK-TYPE WATER CLOSET, WITH 17 1/2" SEAT FOR ADA COMPLIANCE.
P-7	AMERICAN STANDARD	T141000(SINK) 834411(FAUCET)	28" x 28" x 13" D ENAMELED CAST IRON FLOOR-MOUNTED SERVICE SINK
P-8	AMERICAN STANDARD	3636.5T 3636.5W	36" x 36" ACRYLIC SHOWER BASE WITH ACRYLIC SHOWER WALLS FOR ALCOVE INSTALLATION. PROVIDE CHROME-FINISHED SHOWER CURTAIN ROD.
P-9	AMERICAN STANDARD	0415020(LAV) 4801861(FAUCET)	20" x 17" VITREOUS CHINA COUNTERTOP LABORATORY
P-10	GENERAL ELECTRIC	GFC-800R	1/2 HP. WASTE DISPOSAL

PROJECT #	05062-03	PROJECT MANAGER	DLAB
DATE	11-5-1996	DRAWN BY	HTP
SCALE	AS NOTED (1)	REVIEWED BY	DLAB
NOTES			

1. Provide trap primer for floor drain see room 153 XRAY  
 2. Suggest installing a check valve in the domestic hot water return piping



NO.	REVISION	DATE
		11-8-1996

**FEINKNOPF  
MACIOCE  
SCHAPPA  
Architects, Inc.**

274 Marconi Boulevard, Columbus, Ohio 43215  
 tele (614) 221-5192 fax (614) 221-6011

Proposed Office for  
 Columbus Oncology Associates, Inc.  
 810 Jasonway Avenue  
 Columbus, Ohio

FIRST FLOOR  
 PLUMBING PLAN

P-1

