

DOOR SCHEDULE									
DOOR MARK	DOOR WIDTH	HEIGHT	THICKNESS	MATERIAL	ELEVATION	HEAD	JAMB	MATERIAL	REMARKS
A	3'-0"	6'-8"	1 3/4"	SCUD	A	1/A-1	1/2/A-1	HM	
B	3'-0"	6'-8"	1 3/4"	SCUD	A	1/A-1	1/A-1	HM	
C	3'-0"	6'-8"	1 3/4"	SCUD	A	1/A-1	1/A-1	HM	
D	3'-0"	6'-8"	1 3/4"	SCUD	A	1/A-1	1/A-1	HM	
E	3'-0"	6'-8"	1 3/4"	SCUD	A			UID	POCKET DOOR
F	3'-6"	6'-8"	1 3/4"	SCUD	A	1/A-1	1/A-1	HM	LEAD-LINED DOOR & FRAME
G	3'-0"	6'-8"	1 3/4"	SCUD	A	1/A-1	1/A-1	HM	PROVIDE LIGHT SEAL
H	3'-0"	6'-0"		GLASS	A			ALUM.	SHOWER DOOR
J	2'-6"	6'-8"	1 3/4"	SCUD	B	1/A-1	1/A-1	HM	
K	3'-0"	6'-8"	1 3/4"	SCUD	B	6/A-1	6/A-1	HM	
X	EXISTING	DOOR	(PROVIDE AS PART OF BUILDING SHELL)						

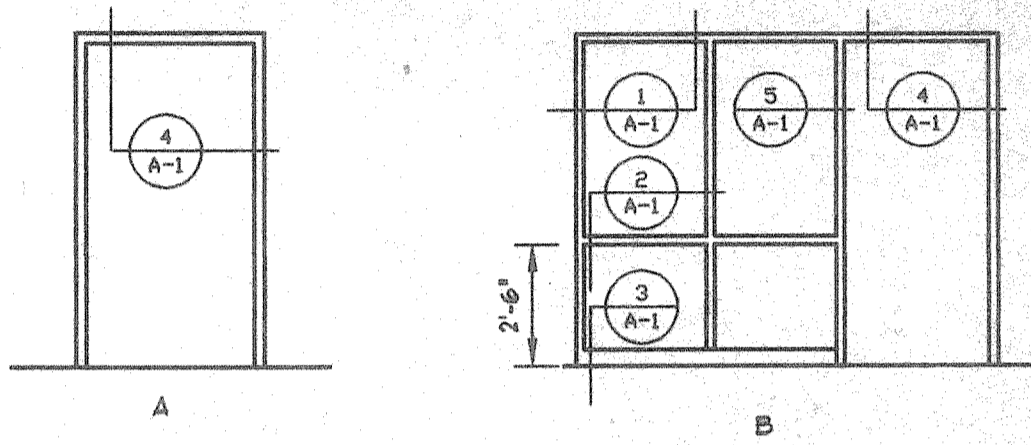
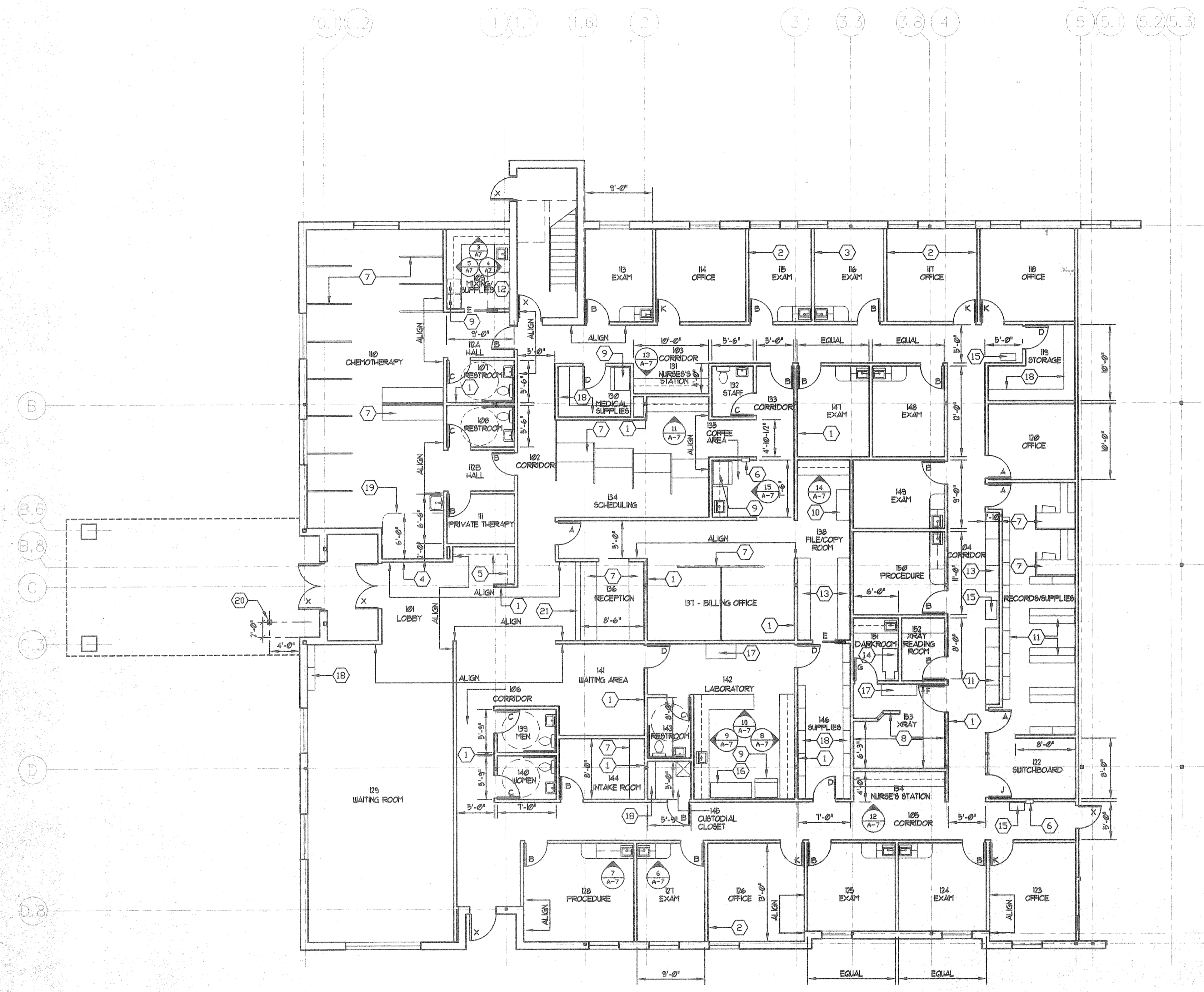
This drawing and the material appearing herein, constitute the original and unpublished work of Feinknopf Macioce Schappa Architects, Inc. and may not be used on any project for any purpose, nor may the same be copied (except by those governmental agencies required by law), or disclosed without written consent of the architect.

© COPYRIGHT FEINKNOPF MACIOCE SCHAPPA, ARCHITECTS, INC. 1996

PROJECT # 95-067-03 PROJECT MANAGER DLAB
 DATE 11-8-1996 DRAWN BY MMP
 SCALE AS NOTED (1) REVIEWED BY DLAB

- GENERAL NOTES:**
- FINISHED INTERIOR MASONRY WALLS ARE TO RECEIVE 5/8" GYPSUM WALLBOARD FINISH OVER 1/8" METAL FURRING.
 - ALL INTERIOR PARTITIONS ARE TO BE CONSTRUCTED OF 3 5/8" METAL STUDS LOCATED 1'-4" ON CENTER WITH 5/8" GYPSUM WALLBOARD FINISH ON BOTH SIDES, UNLESS NOTED OTHERWISE - REFER TO REFLECTED CEILING PLANS FOR LOCATIONS OF ACOUSTIC PARTITIONS.
 - PARTITIONS ENCLOSING OFFICES 114, 117, 118, 123, AND 126 ARE TO RECEIVE AN ADDITIONAL LAYER OF 5/8" GYPSUM BOARD OVER RESILIENT CHANNELS ON ROOM SIDE ONLY.

- CODED NOTES:**
- PARTITION IS TO BE CENTERED ON COLUMN CENTERLINE
 - ALIGN FACE OF FINISHED WALL WITH FINISHED SURFACE OF WINDOW RECESS RETURN, REFER TO DETAIL 6/A-1
 - PARTITION IS TO BE CENTERED ON CENTER WINDOW MULLION, REFER TO DETAIL 1/A-1
 - FINISHED WALL IS TO ALIGN WITH EDGE OF VESTIBULE DOOR JAMB
 - ADJUSTABLE CLOSET ROD WITH SHELF
 - FIRE EXTINGUISHER IN RECESSED CABINET
 - WORKSTATIONS, FURNISHED AND INSTALLED BY TENANT UNDER SEPARATE CONTRACT.
 - WALLS OF X-RAY ROOMS (143,145) ARE TO RECEIVE 1/8" THICK LEAD SHEET X-RAY SHIELDING, FLOOR-TO-CEILING
 - REFRIGERATOR, FURNISHED AND INSTALLED BY TENANT
 - COPIER, FURNISHED AND INSTALLED BY TENANT
 - FREE-STANDING SHELF UNITS, FURNISHED AND INSTALLED BY TENANT.
 - FINE HOOD - EXISTING EQUIPMENT FURNISHED BY TENANT, INSTALLED BY CONTRACTOR VERIFY EQUIPMENT REQUIREMENTS (ELECTRIC SERVICE, DUCTING, SIZE, CLEARANCE, ETC.) PRIOR TO COMMENCING INSTALLATION
 - FILE CABINETS, FURNISHED AND INSTALLED BY TENANT
 - FILM PROCESSOR - EXISTING EQUIPMENT FURNISHED BY TENANT, INSTALLED BY CONTRACTOR VERIFY EQUIPMENT REQUIREMENTS PRIOR TO COMMENCING INSTALLATION
 - CART, FURNISHED BY TENANT
 - TESTING EQUIPMENT RACK, FURNISHED AND INSTALLED BY TENANT.
 - CABINET, FURNISHED BY TENANT, INSTALLED BY CONTRACTOR.
 - WALL STANDARDS 6'-0" LONG HELD 8" ABOVE FLOOR AT 3'-0" O.C. WITH SHELF-SUPPORT BRACKETS AND PLASTIC LAMINATE SHELVES (36 SHELVES IN ROOM 146, 48 SHELVES IN ROOM 120, 48 SHELVES IN ROOM 119, 4 SHELVES IN ROOM 145, 12 SHELVES IN ROOM 123).
 - CEILING-MOUNTED CURTAIN TRACK
 - 6" x 6" GALVANIZED STEEL TUBE WITH 1/4" TOP PLATE, 6'-0" LONG, EMBEDDED 2'-6" BELOW GRADE. COORDINATE FABRICATION WITH MANUFACTURER OF AUTOMATIC DOOR OPERATION
 - PARTIAL HEIGHT PARTITION - REFER TO DETAIL 2/A-1



DOOR ELEVATIONS
1/4" = 1'-0"

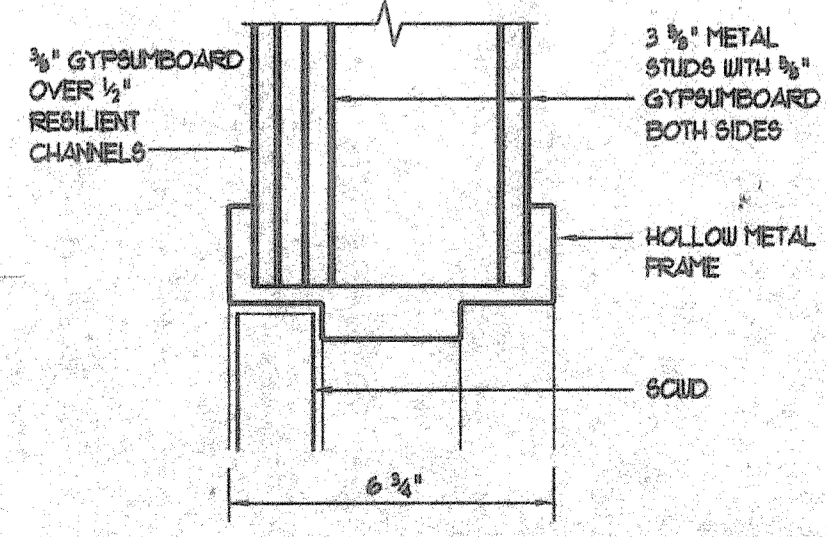
1 SIDELIGHT HEAD
JAMB SIMILAR
3' x 1'-0"

2 SIDELIGHT HORIZONTAL MULLION
3' x 1'-0"

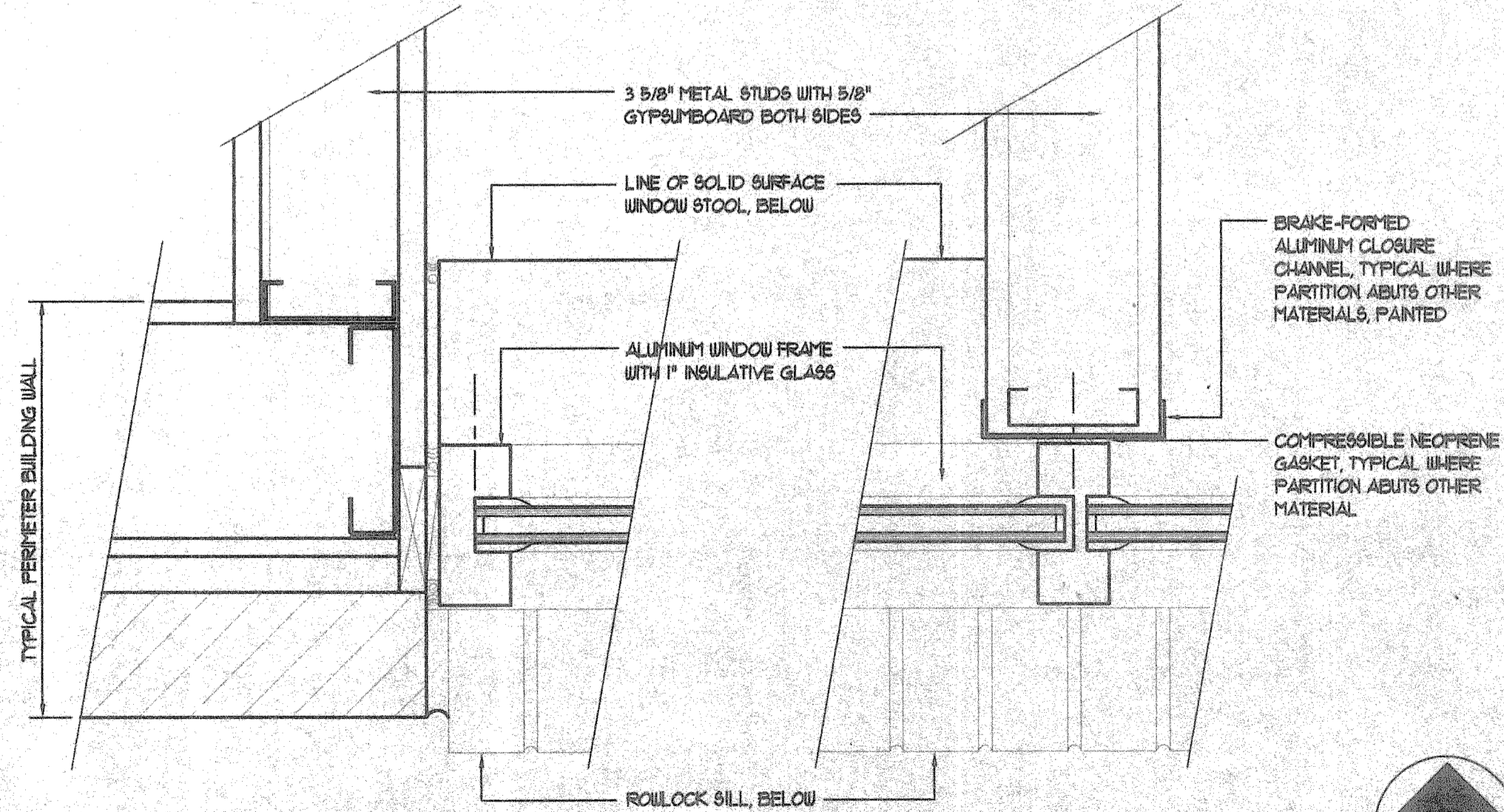
3 SIDELIGHT SILL
3' x 1'-0"

4 DOOR HEAD
JAMB SIMILAR
3' x 1'-0"

5 DOOR JAMB @ SIDELIGHT
3' x 1'-0"



8 DOOR JAMB HEAD SIMILAR
3' x 1'-0"



6 PARTITION @ WINDOW RECESS
3' x 1'-0"

7 BRAKE-FORMED
3' x 1'-0"

NO.	REVISION	DATE
1		11-8-1996

**FEINKNOPF
MACIOCE
SCHAPPA
Architects, Inc.**

274 Mason Road, Columbus, Ohio 43215
 (614) 221-8152 fax (614) 221-5601

Proposed Office for
 Columbus Oncology Associates, Inc.
 810 Jasonway Avenue
 Columbus, Ohio

DATE: 11-8-1996
 SHEET NO. 1

FIRST FLOOR PLAN

A-1

