



This drawing and the material appearing herein, constitute the original and unpublished work of Feinknopf Maciocce Schappa Architects, Inc. and may not be used on any project for any purpose, nor may the same be copied (except by those governmental agencies required by law), or disclosed without written consent of the architect.

© COPYRIGHT FEINKNOPF MACIOCE SCHAPPA, ARCHITECTS, INC.

PROJECT #	95062-01	PROJECT MANAGER	RAP
DATE	11-27-1996	DRAWN BY	WFS
SCALE	1/8" = 1'-0"	REVIEWED BY	RAP

NOTES

CODED NOTES

- ① ④ 14"x10" AIR DEVICE MOUNTED LOW SIDE WALL, RUN 14"x3-1/2" UNLINED RETURN AIR DUCT FROM MAIN RETURN AIR DUCT TO WALL, RUN DOWN IN STUD SPACE TO AIR DEVICE.
- ② SEE SHEET H-3 FOR CONTINUATION.

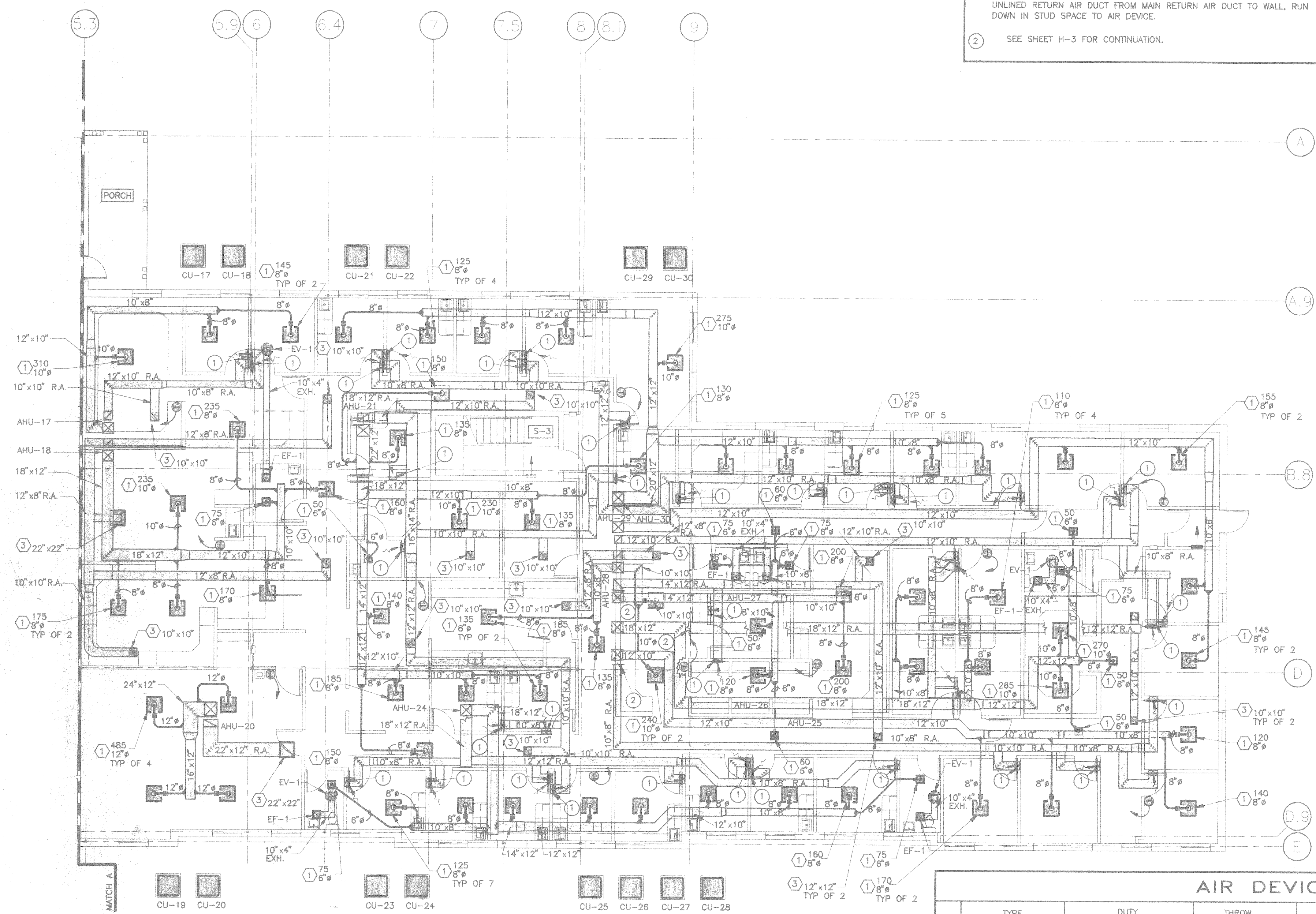
GENERAL NOTES

- 1 MECHANICAL CONTRACTOR TO COORDINATE ALL WORK WITH ELECTRICAL, FIRE PROTECTION, PLUMBING AND GENERAL CONTRACTORS PRIOR TO INSTALLATION TO ENSURE PROPER SPACE TO INSTALL ALL EQUIPMENT. PROVIDE OFFSETS IN DUCTWORK FOR SPRINKLER MAINS WHERE NECESSARY.
- 2 SEE AIR DEVICE SCHEDULE FOR AIR DEVICE TYPES ON SHEET H-2.
- 3 INSTALL DUCTWORK TIGHT TO UNDERSIDE OF DRYWALL CEILING WHEREVER POSSIBLE. ALLOW 6" MINIMUM CLEARANCE ABOVE LAY-IN CEILING FOR LIGHT FIXTURE. COORDINATE WITH RECESSED CAN LIGHTS.
- 4 INSTALL RETURN AIR DUCTWORK IN STUD SPACE WHILE WALL IS BEING BUILT. DUCTWORK TO BE UNLINED IN WALL. COORDINATE WITH GENERAL CONTRACTOR. ACOUSTIC WALL INSULATION TO BE DELETED IN SPACES WITH DUCTWORK.
- 5 RUN ALL REFRIGERANT PIPING CONCEAL IN OUTSIDE WALL AND ABOVE CEILING.
- 6 KEEP OUTSIDE AIR INTAKE TO AIR HANDLING UNITS A MINIMUM OF 10'-0" FROM EXHAUST CAPS, VENTS, AND FLUES.

HEATING SYMBOLS

NOTES: ALL SYMBOLS MAY NOT APPLY.

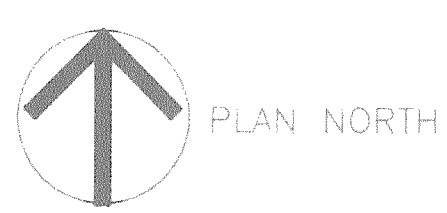
— D — DRAIN	— GATE VALVE (FLANGED)
— CWS — CHILLED WATER SUPPLY	— GATE VALVE (SCREWED)
— CWR — CHILLED WATER RETURN	— GLOBE VALVE
— CS — CONDENSER WATER SUPPLY	— BALANCE FITTING
— CR — CONDENSER WATER RETURN	— GAGE COCK
— HRS — HEAT RECOVERY SUPPLY	— DRAIN VALVE
— HRR — HEAT RECOVERY RETURN	— PNEUMATIC CONTROL VALVE
— HWS — HOT WATER SUPPLY	— ELECTRIC CONTROL VALVE
— HWR — HOT WATER RETURN	— PNEUMATIC 3-WAY OR DIVERTING VALVE
— TOP 45 TAKE OFF	— CHECK VALVE
— BOTTOM 45 TAKE OFF	— BUTTERFLY VALVE
— SUPPLY RISER	— BALANCE VALVE
— RETURN RISER	— BALL VALVE
— PIPE UNION	— Y-TYPE STRAINER
— PIPE ANCHOR	— THERMOMETER
— PIPE GUIDES	— SUPPLY DUCT-UP
— PIPE FLANGES	— SUPPLY DUCT-DOWN
— CONCENTRIC REDUCERS	— RETURN, EXHAUST, RELIEF, OR MIXED AIR DUCT-UP
— ECCENTRIC REDUCER	— RETURN, EXHAUST, RELIEF, OR MIXED AIR DUCT-DOWN
— F&T — FLOAT & THERMOSTATIC TRAP	— ELBOW TURNING VANES
— LIQ — LIQUID LINE	— FIRE DAMPER
— SUCT — SUCTION LINE	— ACCESS DOOR
— HG — HOT GAS LINE	— AIR SCOOP
— HPS — HIGH PRESSURE STEAM	— FLEXIBLE DUCT
— LPS — LOW PRESSURE STEAM	— FLEXIBLE CONNECTION
— CPD — CONDENSATE PUMP DISCHARGE	— THERMOSTAT
— HPC — HIGH PRESSURE CONDENSATE	— HUMIDISTAT
— LPC — LOW PRESSURE CONDENSATE	
— CONNECT TO EXISTING	



AIR DEVICE SCHEDULE

KEY	TYPE	DUTY	THROW				MATERIAL		ACCESSORY		MODEL NO.	REMARKS
			1-WAY	2-WAY	3-WAY	4-WAY	STEEL	ALUMINUM	PLASTIC	DAMPER		
①	DIFFUSER										TMS	LAY-IN DIFFUSER
②	REGISTER										272RL	
③	GRILLE										PAR	LAY-IN
④	LINEAR DIFFUSER										350RL	RETURN GRILLE FIXED BLADES

FIRST FLOOR HVAC PLAN "B"
1/8" = 1'-0"



- ① BASED ON TITUS.
- ② VERIFY MOUNTING ARRANGEMENT W/ CEILING TYPE. (LAY-IN, DRYWALL, ETC.)

NO. REVISION DESCRIPTION DATE

**FEINKNOPF
MACIOCE
SCHAPPA
Architects, Inc.**

274 Marconi Boulevard, Columbus, Ohio 43215
tele (614) 221-3192 fax (614) 221-5601

Proposed Office for
Central Ohio Internal Medicine
810 Jasonway Avenue
Columbus, Ohio

SHEET TITLE SHEET NO.

**FIRST FLOOR HVAC
PLAN "B" H-2**

