



This drawing and the material appearing herein, constitute the original and unpublished work of Feinknopf Macioce Schappa Architects, Inc. and may not be used on any project for any purpose, nor may the same be copied (except by those governmental agencies required by law), or disclosed without written consent of the architect.

© COPYRIGHT FEINKNOPF MACIOCE SCHAPPA, ARCHITECTS, INC.

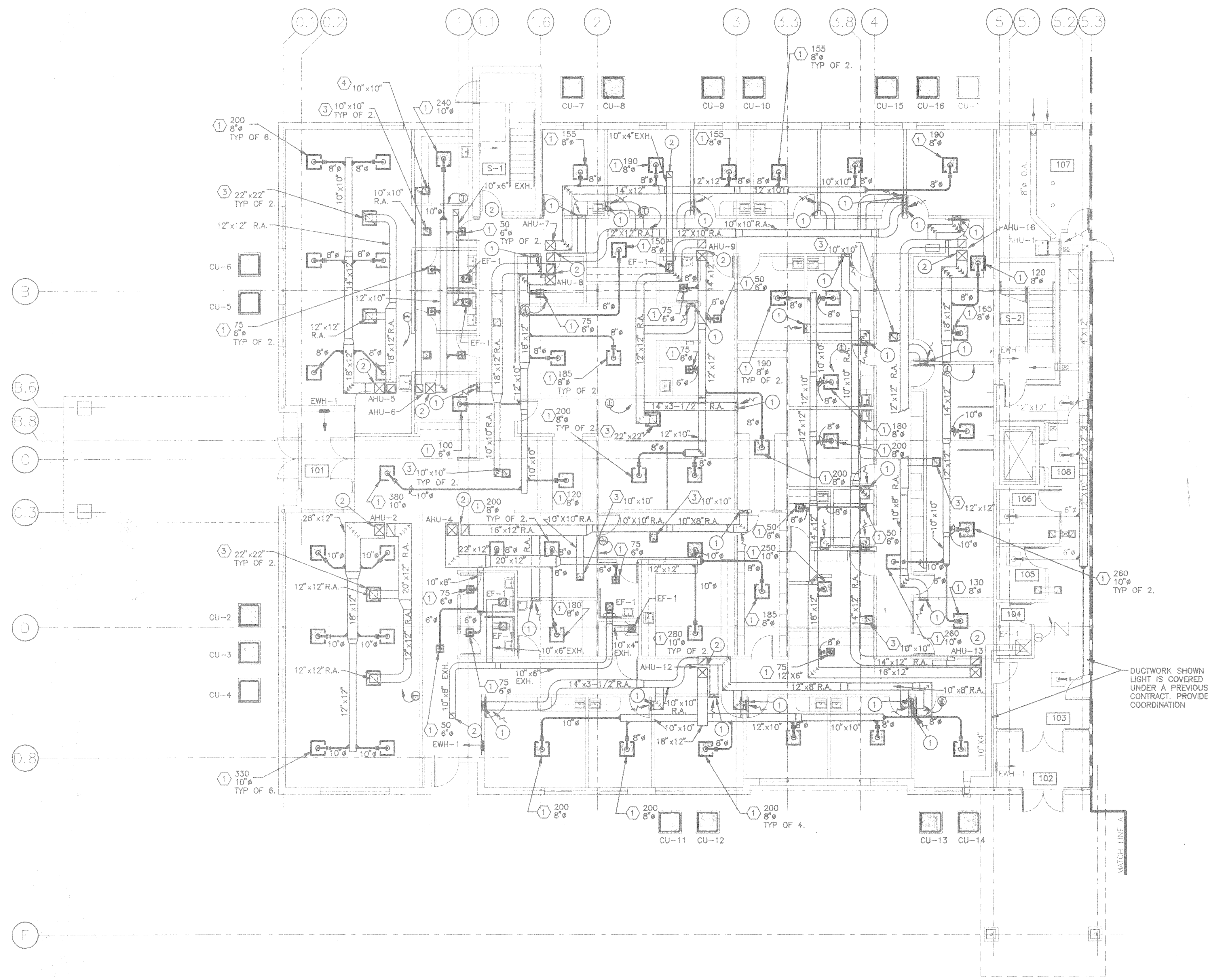
PROJECT #	95062-01	PROJECT MANAGER	RAP
DATE	11-27-1996	DRAWN BY	WFS/DGN
SCALE	1/8"=1'-0"	REVIEWED BY	DMW

- ### GENERAL NOTES
- MECHANICAL CONTRACTOR TO COORDINATE ALL WORK WITH ELECTRICAL FIRE PROTECTION, PLUMBING AND GENERAL CONTRACTORS PRIOR TO INSTALLATION TO ENSURE PROPER SPACE TO INSTALL ALL EQUIPMENT. PROVIDE OFFSETS IN DUCTWORK FOR SPRINKLER MAINS WHERE NECESSARY.
 - SEE AIR DEVICE SCHEDULE FOR AIR DEVICE TYPES ON SHEET H-2.
 - INSTALL DUCTWORK TIGHT TO UNDERSIDE OF DRYWALL CEILING WHEREVER POSSIBLE. ALLOW 6" MINIMUM CLEARANCE ABOVE LAY-IN CEILING FOR LIGHT FIXTURE. COORDINATE WITH RECESSED CAN LIGHTS.
 - INSTALL RETURN AIR DUCTWORK IN STUD SPACE WHILE WALL IS BEING BUILT. DUCTWORK TO BE UNLINED IN WALL. COORDINATE WITH GENERAL CONTRACTOR. ACOUSTIC WALL INSULATION TO BE DELETED IN SPACES WITH DUCTWORK.
 - RUN ALL REFRIGERANT PIPING CONCEAL IN OUTSIDE WALL AND ABOVE CEILING.
 - KEEP OUTSIDE AIR INTAKE TO AIR HANDLING UNITS A MINIMUM OF 10'-0" FROM EXHAUST CAPS, VENTS, AND FLUES.

- ### CODED NOTES
- ① ④ 14"x10" AIR DEVICE MOUNTED LOW SIDE WALL, RUN 14"x3-1/2" UNLINED RETURN AIR DUCT FROM MAIN RETURN AIR DUCT TO WALL, RUN DOWN IN STUD SPACE TO AIR DEVICE.
 - ② SEE SHEET H-3 FOR CONTINUATION OF DUCTWORK.

HEATING ABBREVIATIONS

AB	ABOVE	H & A/C	HEATING & AIR CONDITIONING
A/C	AIR CONDITIONING	H & V	HEATING & VENTILATING
AD	ACCESS DOOR	HC	HEATING CONTRACTOR
AD	ACCESS DOOR	HORIZ	HORIZONTAL
AFF	ABOVE FINISHED FLOOR	HP	HORSEPOWER
AFG	ABOVE FINISHED GRADE	HSW	HIGH SIDE WALL
AHU	AIR HANDLING UNIT	HT	HEIGHT
AP	ACCESS PANEL	HTG	HEATING
APPROX	APPROXIMATE	HTR	HEATER
ARCH	ARCHITECT	HZ	HERTZ
BDD	BACKDRAFT DPR.	KES	KITCHEN EQUIPMENT SUPPLIER
BEL	BELOW	KIT	KITCHEN
BLDG	BUILDING	LSW	LOW SIDE WALL
CAP	CAPACITY	MAN BAL DPR	MANUAL BALANCE DAMPER
CFM	CUBIC FEET PER MINUTE	MAX	MAXIMUM
CHEM	CHEMICAL	MECH	MECHANICAL
CIRC	CIRCULATING	MFR	MANUFACTURER
CLG	CEILING	MIN	MINIMUM
COMPR	COMPRESSOR	MT	MOUNT
CONC	CONCRETE	MTD	MOUNTED
CONN	CONNECTION	MTG	MOUNTING
CONT	CONTINUATION	MTL	METAL
CONTR	CONTRACTOR	MUA	MAKE UP AIR
COORD	COORDINATE	OA	OUTSIDE AIR
DIA	DIAMETER	OC	ON CENTER
DIFF	DIFFUSER	PC	PLUMBING CONTRACTOR
DISC	DISCONNECT	PLBG	PLUMBING
DN	DOWN	PROJ	PROJECTION
DPR	DAMPER	RA	RETURN AIR
DTL	DETAIL	REL A	RELIEF AIR
DWGS	DRAWINGS	REQD	REQUIRED
EA	EACH	RF	ROOF
EC	ELECTRICAL CONTRACTOR	SA	SUPPLY AIR
ELEV	ELEVATION	SCHED	SCHEDULE
ENGR	ENGINEER	SHT	SHEET
EX	EXISTING	SPEC	SPECIFICATION
EXH	EXHAUST	STAT	THERMOSTAT
FCU	FAN COIL UNIT	TCC	TEMPERATURE CONTROL CONTRACTOR
FD	FLOOR DRAIN	TYP	TYPICAL
F. DPR.	FIRE DAMPER	UH	UNIT HEATER
FIN RAD	FINNED RADIATION	UV	UNIT VENTILATOR
FLEX	FLEXIBLE	V	VENT
FLR	FLOOR	VERT	VERTICAL
FRACT	FRACTIONAL	W/	WITH
FURN	FURNISH	WH	WATER HEATER
FUT	FUTURE	W/O	WITHOUT
G	GAS		
GAL	GALLON		
GEN	GENERAL		
GPH	GALLONS PER HOUR		
GPM	GALLONS PER MINUTE		

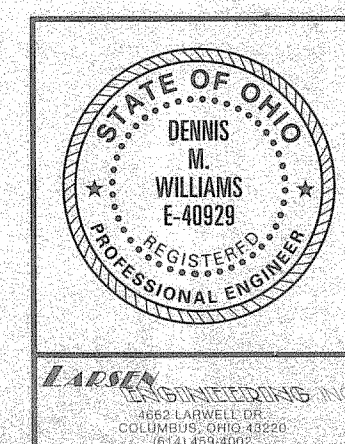


FIRST FLOOR HVAC PLAN "A"
1/8" = 1'-0"
PLAN NORTH

**FEINKNOPF
MACIOCE
SCHAPPA
Architects, Inc.**

274 Marconi Boulevard, Columbus, Ohio 43215
tele (614) 221-3192 fax (614) 221-3601

Proposed Office for
Columbus Oncology Associates, Inc.
810 Jasonway Avenue
Columbus, Ohio



**FIRST FLOOR HVAC
PLAN "A"** **H-1**