

DON'T USE THIS PANEL USE CARD IN PANEL

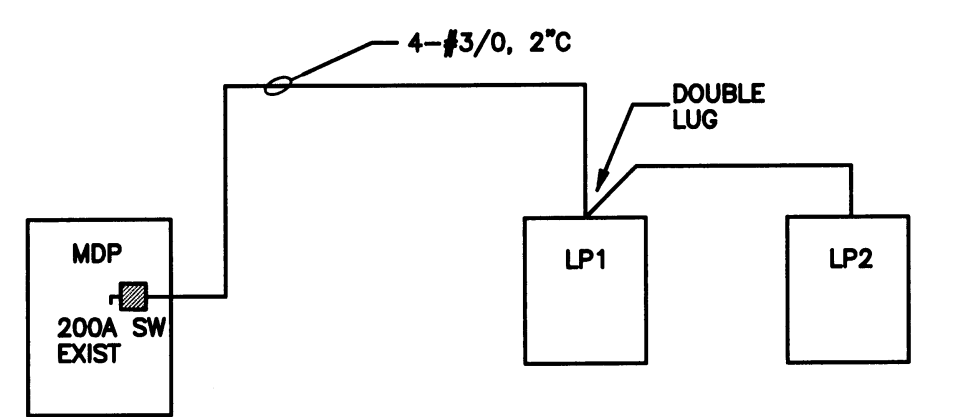
PANELBOARD DESIGNATION LP1		LOCATION													
VOLTAGE: 208/120 PH 3 WIRE 4		MOUNTING: FLUSH X SURFACE													
AMPS: 225 M.L.C. 225 M.C.B. AMPS		FED FROM: TOP X BOTTOM													
NO.	DESCRIPTION	LTG.	REC.	MISC.	A	B	C	MISC.	LTG.	REC.	DESCRIPTION	NO.			
1	LTG	1.3							1.2		REC	2			
3	LTG	1.2							1.2		REC	4			
5	LTG	1.0							1.2		REC	6			
7	LTG - 2nd FL.	1.2							1.2		REC	8			
9	LTG - 2nd FL.	1.2							1.2		REC	10			
11	LTG - 2nd FL.	1.2							1.2		REC	12			
13	LTG - 2nd FL.	1.2							1.2		REC	14			
15	EXT LTG								1.2		REC	16			
17	EXT LTG								1.2		REC	18			
19	DOOR								1.2		REC	20			
21	DOOR								1.2		REC	22			
23	SPARE								1.2		REC	24			
25	SPARE								1.2		REC	26			
27	2nd FL. - EXIST	1.2							1.2		2nd FL. - SERVER	28			
29	2nd FL. - EXIST	1.2							1.2		2nd FL. - SERVER	30			
31	2nd FL. - EXIST	1.2							1.2		2nd FL. - SERVER	32			
33	2nd FL. - EXIST	1.2							1.2		2nd FL. - SERVER	34			
35	2nd FL. - EXIST	1.2							1.2		2nd FL. - SERVER	36			
37	2nd FL. - EXIST	1.2							1.2		2nd FL. - SERVER	38			
39	SPARE								1.2		2nd FL. - AC-1	40			
41	SPARE								1.2		SPARE	42			
KVA SUB TOTALS											14		22		
CONVD LOAD KVA											36		28		80
DEMAND LOAD KVA											28				
DEMAND AMPERES															

NOTE: ALL BREAKERS 20A, UNLESS OTHERWISE NOTED. ALL BRKS FEEDING MECH UNITS SHALL BE HACR TYPE

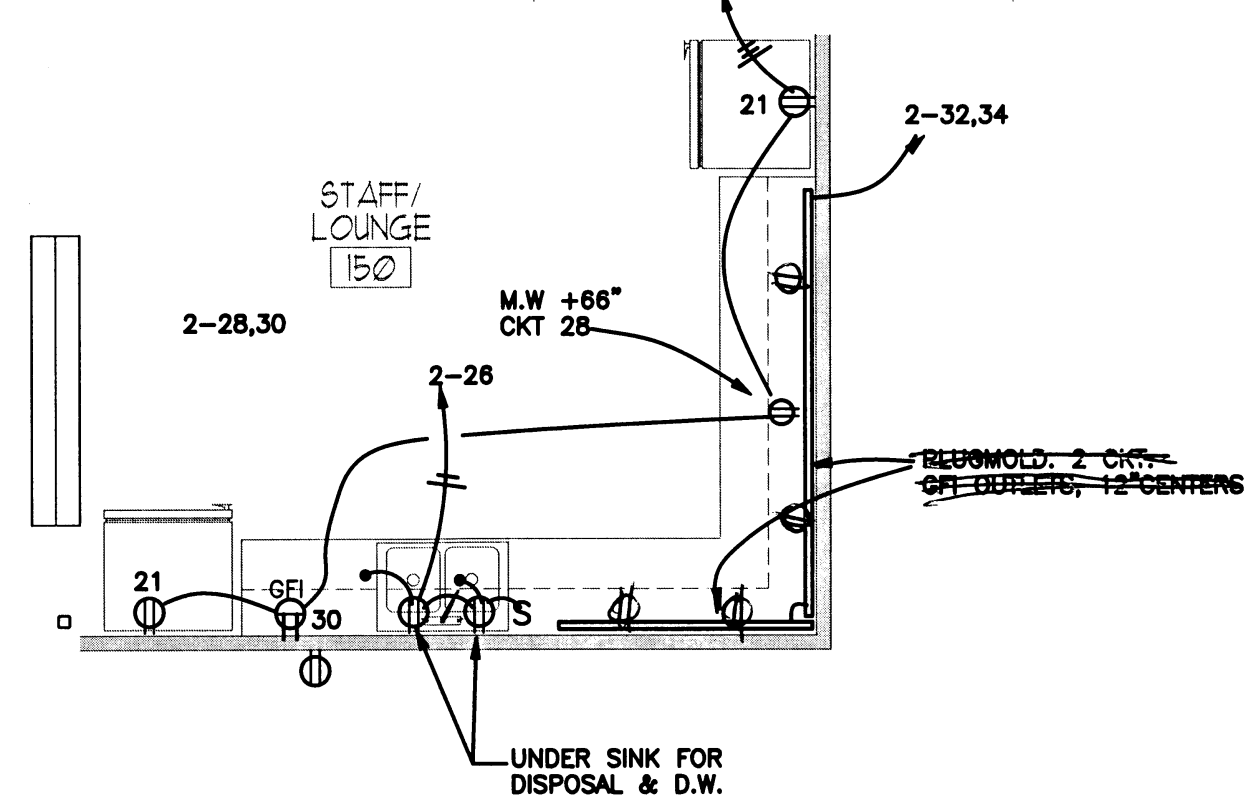
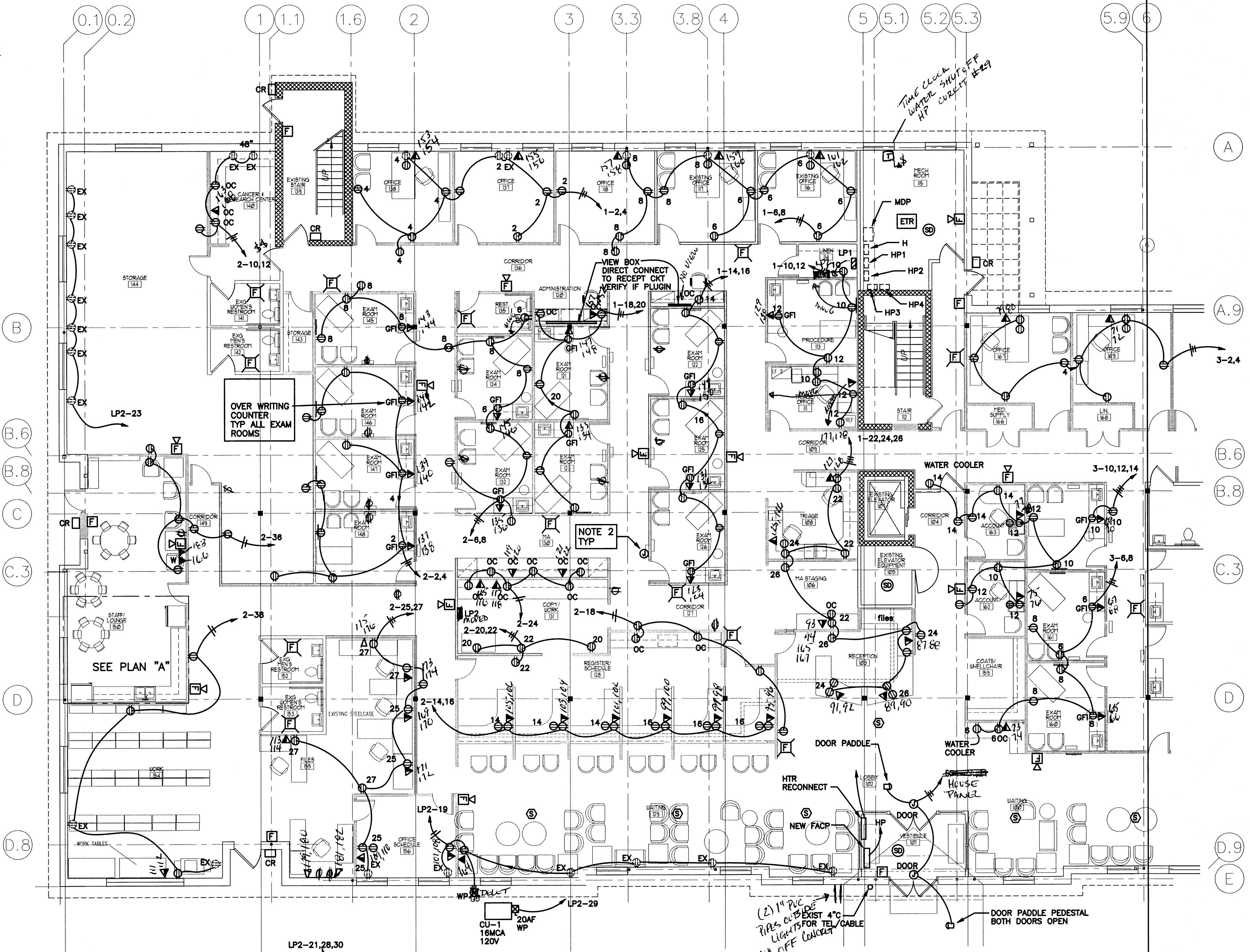
USE CARD IN PANEL

PANELBOARD DESIGNATION LP2		LOCATION													
VOLTAGE: 208/120 PH 3 WIRE 4		MOUNTING: FLUSH X SURFACE													
AMPS: 225 M.L.C. 225 M.C.B. AMPS		FED FROM: TOP X BOTTOM													
NO.	DESCRIPTION	LTG.	REC.	MISC.	A	B	C	MISC.	LTG.	REC.	DESCRIPTION	NO.			
1	LTG	1.2							1.2		REC	2			
3	LTG	1.2							1.2		REC	4			
5	LTG	1.2							1.2		REC	6			
7	LTG	1.3							1.2		REC	8			
9	LTG	1.2							1.2		REC	10			
11	LTG	1.5							1.2		REC	12			
13	LTG	.9							1.2		REC	14			
15	SPARE								1.2		REC	16			
17	SPARE								1.2		REC	18			
19	REC								1.2		REC	20			
21	LOUNGE								1.2		REC	22			
23	STORAGE								1.2		REC	24			
25	REC	1.2							1.2		LOUNGE	26			
27	REC	1.2							1.2		LOUNGE	28			
29	CU-1								1.2		LOUNGE	30			
31	SPARE								1.2		LOUNGE	32			
33	SPARE								1.2		LOUNGE	34			
35	SPARE								1.2		LOUNGE	36			
37	SPARE								1.2		REC	38			
39	SPARE								1.2		SPARE	40			
41	SPARE								1.2		SPARE	42			
KVA SUB TOTALS											9	3	21		
CONVD LOAD KVA											33		28		80
DEMAND LOAD KVA											28				
DEMAND AMPERES															

NOTE: ALL BREAKERS 20A, UNLESS OTHERWISE NOTED. ALL BRKS FEEDING MECH UNITS SHALL BE HACR TYPE



PARTIAL ONE LINE DIAGRAM
N.T.S.



PARTIAL PLAN "A"
SCALE: 1/4" = 1'-0"

POWER PLAN - WEST
SCALE: 1/8" = 1'-0"

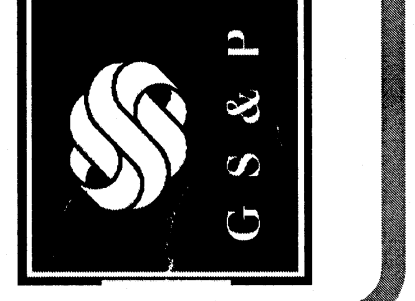
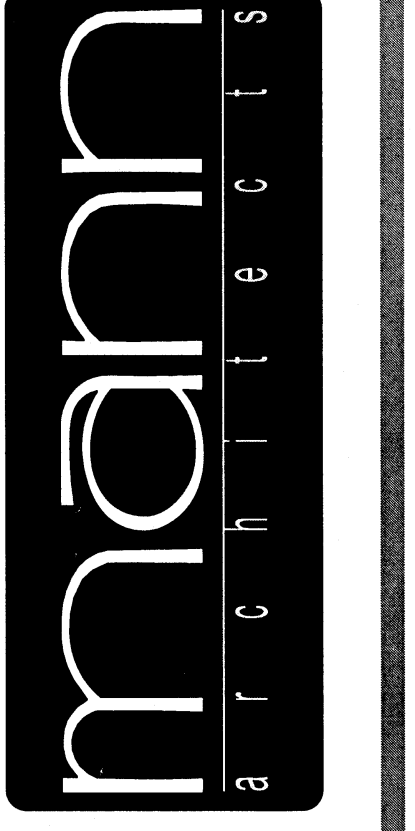
- GENERAL NOTES:**
- PROVIDE NEW GAMEWELL ADDRESSABLE F.A SYSTEM ALL EXIST DEVICES TO BE REPLACED OR REMOVED.
 - ALL DWGS: PROJECT WILL BE BUILT IN PHASES. 2ND WORK FIRST. COORDINATE WORK, TEMP CKTS, ETC WITH GC AND ARCH PHASING DWGS.
 - PROVIDE SAFETY TYPE RECEPITS IN ALL EXAM ROOMS AND WAITING AREAS.

- NOTES:**
- MOUNT ALL OUTLETS AT DESKS IN OPEN KNEE SPACES. SEE ARCH ELEVATIONS.
 - PROVIDE JBOX AND 1/2" UP TO CLG SPACE FOR PATIENT RM INDICATOR (OR PAGING). VERIFY MTC HT W/GC (EITHER 48 OR 54"). SYSTEM INSTALLED BY OTHERS. PROVIDE FOR EACH EXAM ROOM. TYP.
 - PROVIDE MUSIC SPEAKERS IN WAITING AREA. CONNECT ALL TOGETHER AND RUN UP TO SERVER ROOM. OWNER WILL PURCHASE FUT AMPLIFIER.

ALL SPEAKERS HAVE BEEN REMOVED.
DON'T USE THIS DRAWING FOR FIRE ALARM USE FIRE BLUE PRINT.

revisions

3660 embassy parkway
akron, ohio 44333
tel. 330 . 666 . 5770
fax. 330 . 666 . 8812
www . mann-architects . com



drawing
POWER PLAN - WEST scale
project no. 114206 date OCTOBER 23, 2001 AS NOTED
COLUMBUS ONCOLOGY
JASONWAY PROFESSIONAL BUILDING
810 JASONWAY AVENUE, SUITE A
COLUMBUS, OHIO 43214-2329 project

