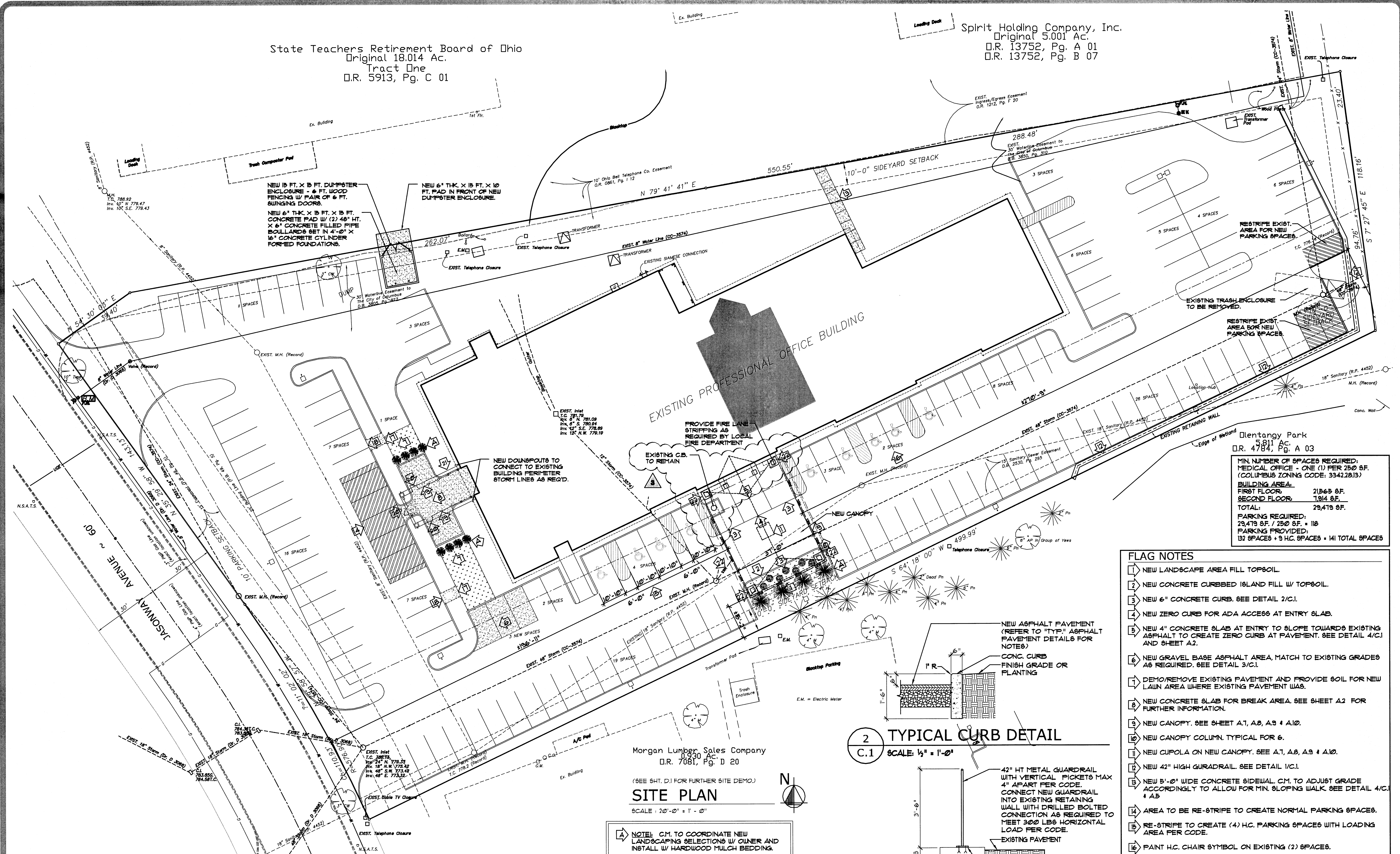


State Teachers Retirement Board of Ohio
Original 18.014 Ac.
Tract One
D.R. 5913, Pg. C 01

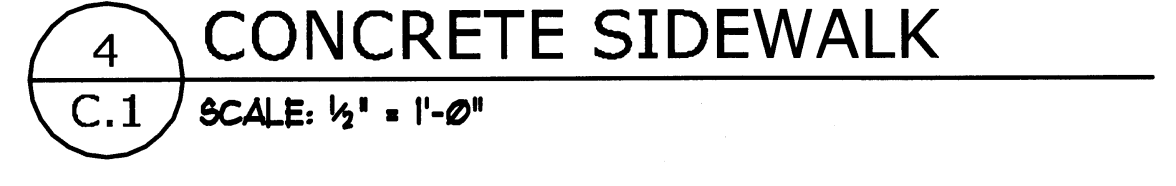
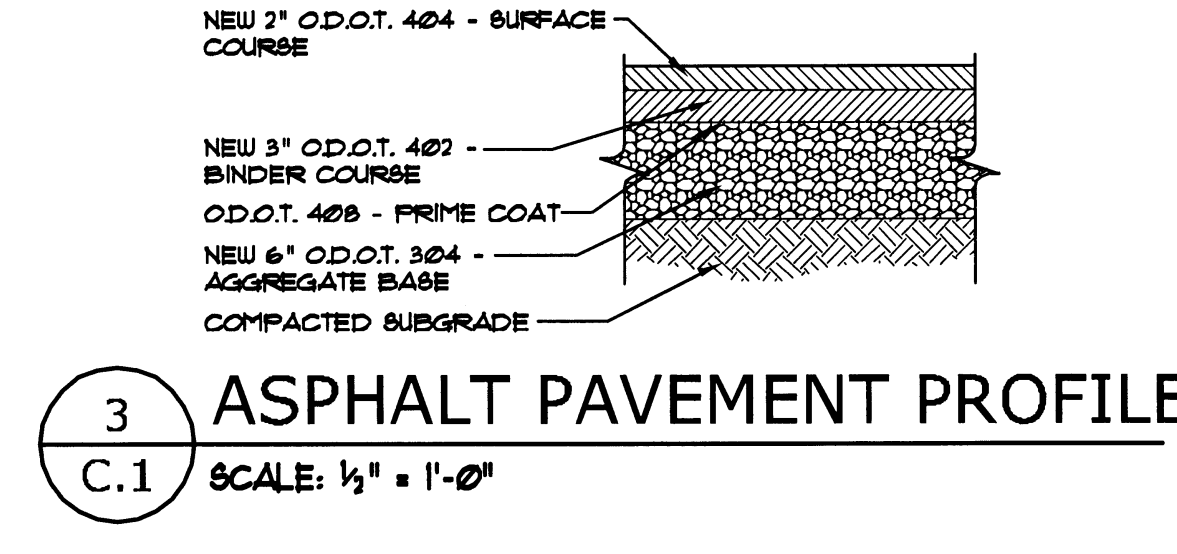
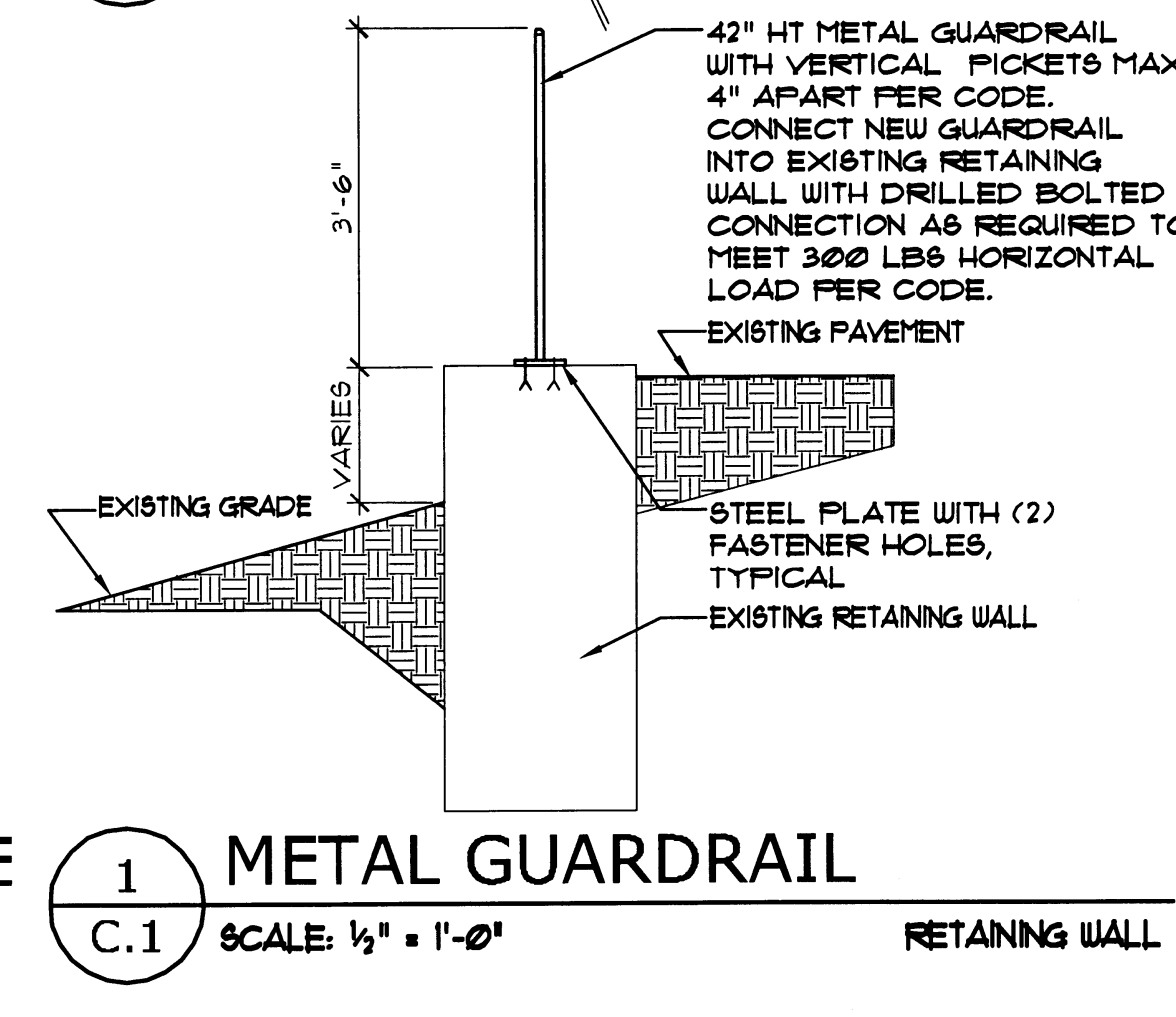
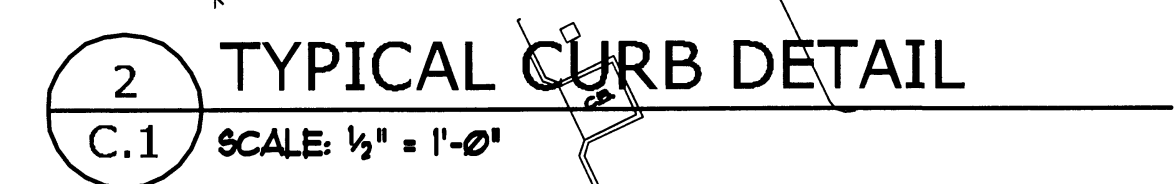
Spirit Holding Company, Inc.
Original 5.001 Ac.
D.R. 13752, Pg. A 01
D.R. 13752, Pg. B 07



5.811 Ac
D.R. 4784, Pg. A 03

MIN. NUMBER OF SPACES REQUIRED:	
MEDICAL OFFICE - ONE (1) PER 250 SF.	
(COLUMBUS ZONING CODE: 3342.2013)	
BUILDING AREA:	
FIRST FLOOR	21565 SF.
SECOND FLOOR	1914 SF.
TOTAL:	29479 SF.
PARKING REQUIRED:	29479 SF. / 250 SF. = 118
PARKING PROVIDED:	132 SPACES + 9 H.C. SPACES = 141 TOTAL SPACES

- FLAG NOTES**
- 1 NEW LANDSCAPE AREA FILL TOPSOIL.
 - 2 NEW CONCRETE CURBED ISLAND FILL W/ TOPSOIL.
 - 3 NEW 6" CONCRETE CURB. SEE DETAIL 2/C.1.
 - 4 NEW ZERO CURB FOR ADA ACCESS AT ENTRY SLAB.
 - 5 NEW 4" CONCRETE SLAB AT ENTRY TO SLOPE TOWARDS EXISTING ASPHALT TO CREATE ZERO CURB AT PAVEMENT. SEE DETAIL 4/C.1 AND SHEET A.2.
 - 6 NEW GRAVEL BASE ASPHALT AREA, MATCH TO EXISTING GRADES AS REQUIRED. SEE DETAIL 3/C.1.
 - 7 DEMO/REMOVE EXISTING PAVEMENT AND PROVIDE SOIL FOR NEW LAWN AREA WHERE EXISTING PAVEMENT WAS.
 - 8 NEW CONCRETE SLAB FOR BREAK AREA. SEE SHEET A.2 FOR FURTHER INFORMATION.
 - 9 NEW CANOPY. SEE SHEET A.1, A.8, A.9 & A.10.
 - 10 NEW CANOPY COLUMN. TYPICAL FOR 6.
 - 11 NEW CUPOLA ON NEW CANOPY. SEE A.1, A.8, A.9 & A.10.
 - 12 NEW 42" HIGH GUARDRAIL. SEE DETAIL 1/C.1.
 - 13 NEW 5'-0" WIDE CONCRETE SIDEWALK. CM. TO ADJUST GRADE ACCORDINGLY TO ALLOW FOR MIN. SLOPING WALK. SEE DETAIL 4/C.1 & A.3.
 - 14 AREA TO BE RE-STRIPE TO CREATE NORMAL PARKING SPACES.
 - 15 RE-STRIPE TO CREATE (4) H.C. PARKING SPACES WITH LOADING AREA PER CODE.
 - 16 PAINT H.C. CHAIR SYMBOL ON EXISTING (2) SPACES.
 - 17 REMOVE EXISTING CONCRETE CURB.
 - 18 REMOVE EXISTING CONCRETE SIDEWALK AND REPLACE WITH NEW LANDSCAPE. LANDSCAPE BY OWNER.
 - 19 NEW 4'-0" HT. ALUM. 'POOL' FENCE WITH VERTICAL PICKETS AND SUPPORT POSTS AS REQ'D. COLOR SELECTION BY OWNER.
 - 20 NEW 3'-0" W. MIN. SWINGING GATE TO ALLOW ACCESS/EGRESS FROM EMPLOYEE TERRACE.
 - 21 NEW WOOD ROOF STRUCTURE BUILT ON EXISTING STEEL BEAMS - SEE SHEET A.1.
 - 22 NEW DOWNSPOUTS TO CONNECT TO CLOSEST EXISTING CATCH BASIN. G.C. TO CONNECT NEW STORM LINE TO EXISTING UNDERGROUND STORM AS REQ'D. PATCH AND REPAIR EXISTING ASPHALT AS REQ'D.



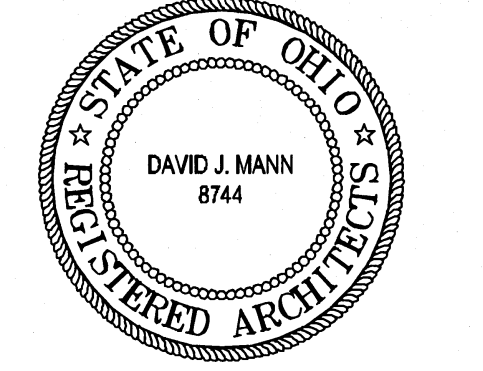
Morgan Lumber Sales Company
D.R. 7081, Pg. D 20

SITE PLAN

SCALE: 20'-0" = 1'-0"

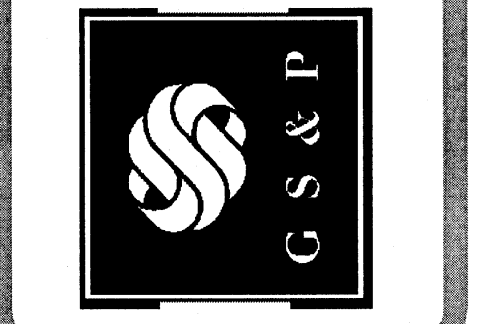
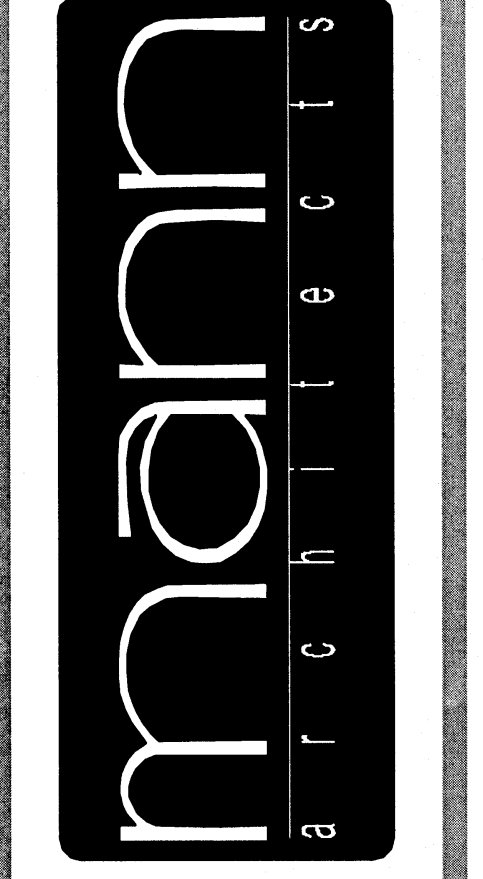
NOTE: CM. TO COORDINATE NEW LANDSCAPING SELECTIONS W/ OWNER AND INSTALL W/ HARDWOOD MULCH BEDDING.

BENCH MARK
W. Bolt of Fire Hydrant, 24'± S. of N.W. corner of site,
E. side of Jasonway Avenue.
Elev. 787.53
(U.S.G.S. Datum)



REVISIONS
APPENDIX No. 1
APPENDIX No. 4
BULLETIN No. 1
BULLETIN No. 2
BULLETIN No. 3

3660 embassy parkway
akron, ohio 44333
tel. 330.666.5770
fax. 330.666.8812
web site www.mann-architects.com



drawing
SITE PLAN
project no. 11406
date OCTOBER 23, 2007
scale AS NOTED

COLUMBUS ONCOLOGY
JASONWAY PROFESSIONAL BUILDING
810 JASONWAY AVENUE, SUITE A
COLUMBUS, OHIO 43214-2395

C.1
OF 1
sheet no.