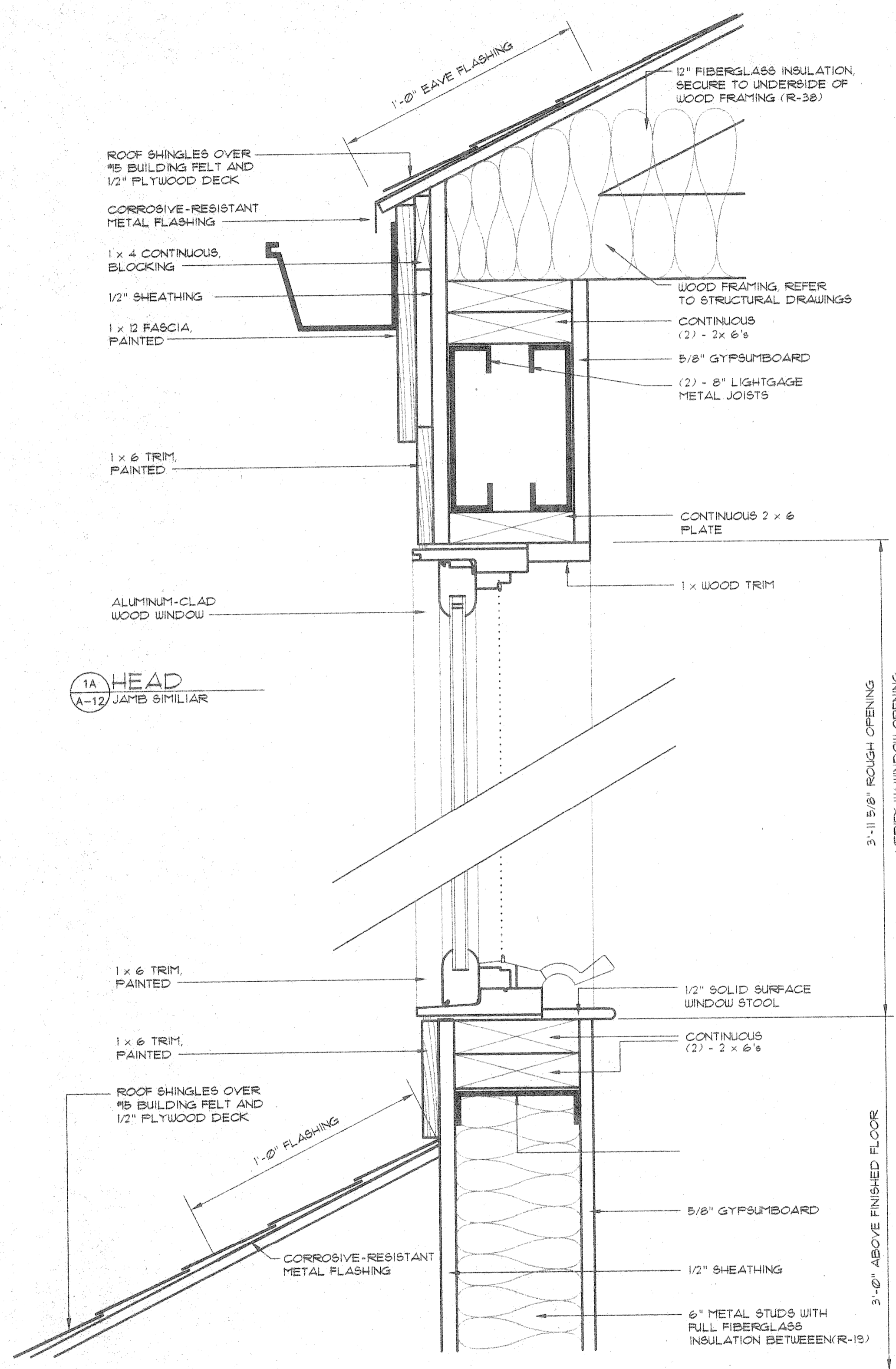


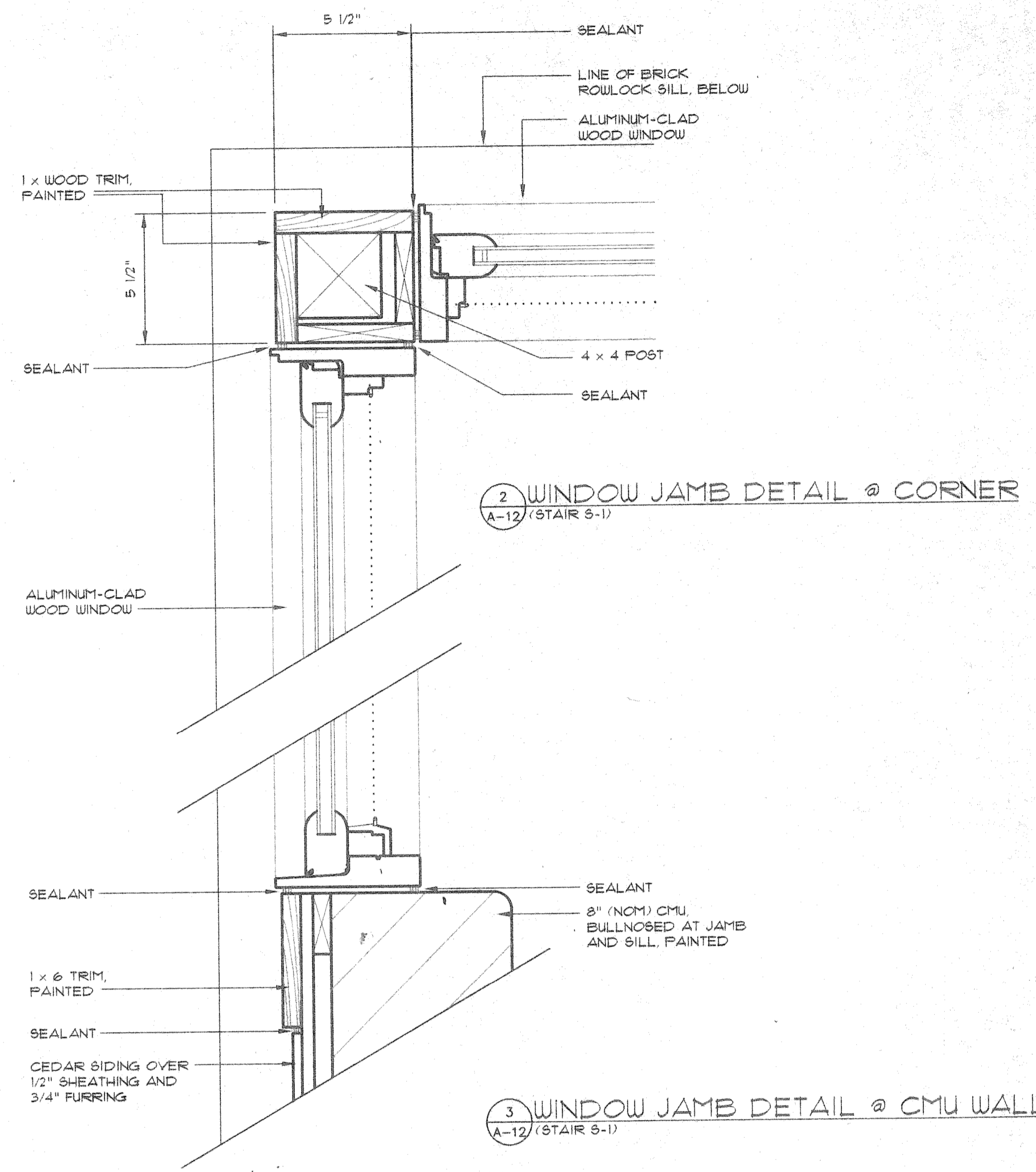
This drawing and the material appearing herein, constitute the original and unpublished work of Feinknopf Macioce Schappa Architects, Inc. and may not be used on any project for any purpose, nor may the same be copied (except by those governmental agencies required by law), or disclosed without written consent of the architect.

© COPYRIGHT FEINKNOPF MACIOCE SCHAPPA ARCHITECTS, INC. 1995

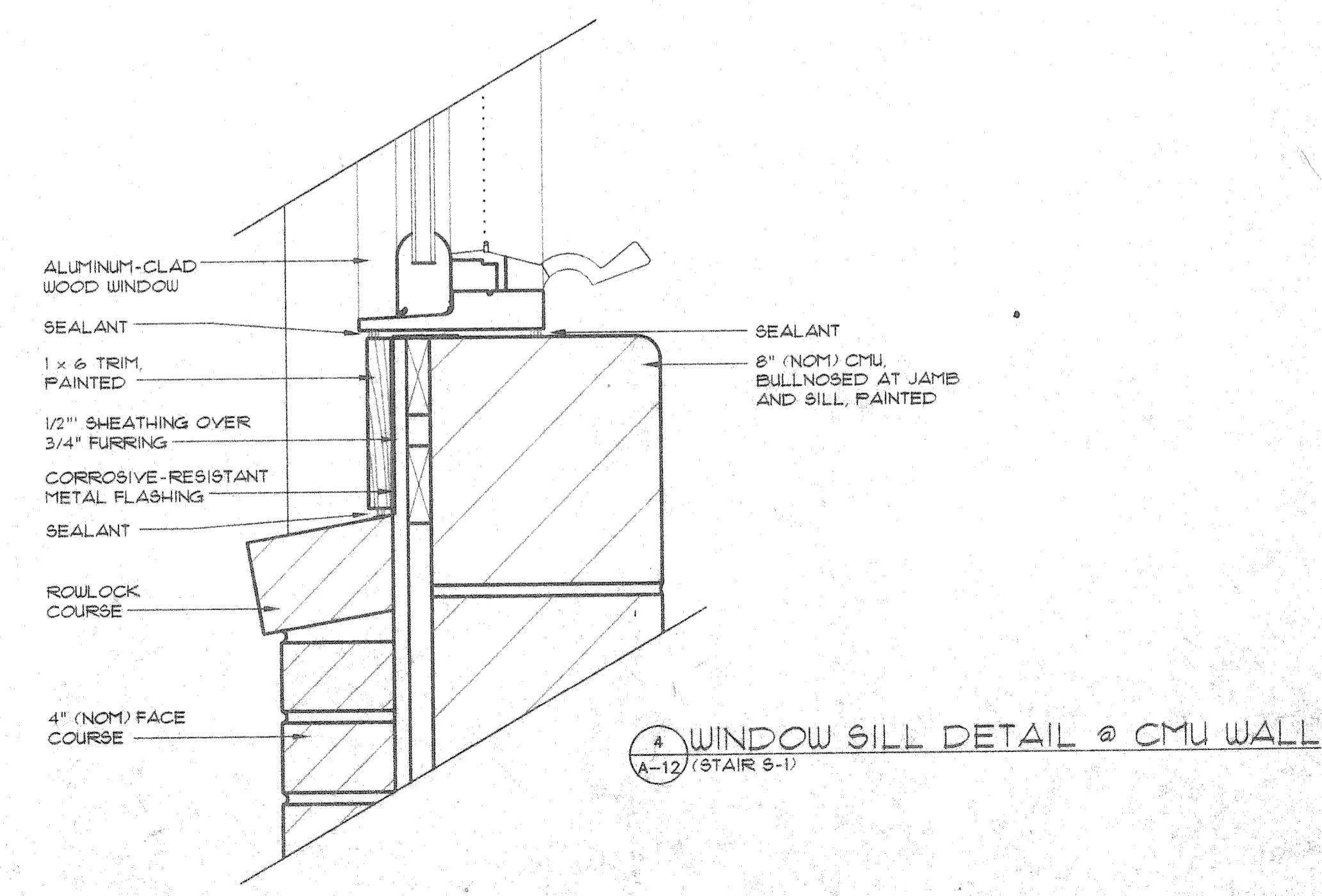
PROJECT #	95062-01	PROJECT MANAGER	DLAB
DATE	7-11-1996	DRAWN BY	MMP
SCALE	3" = 1'-0"	REVIEWED BY	DLAB
NOTES			



1A HEAD JAMB SIMILIAR



2 WINDOW JAMB DETAIL @ CORNER  
A-12 / (STAIR 5-1)



3 WINDOW JAMB DETAIL @ CMU WALL  
A-12 / (STAIR 5-1)

1B SILL JAMB SIMILIAR

4 WINDOW SILL DETAIL @ CMU WALL  
A-12 / (STAIR 5-1)

NO.	REVISION DESCRIPTION	DATE
<b>FEINKNOPF MACIOCE SCHAPPA</b> Architects, Inc. 274 Marconi Boulevard, Columbus, Ohio 43215 tele (614) 221-5192 fax (614) 221-5001		
JASONWAY MEDICAL OFFICE BUILDING		
SHEET TITLE		SHEET NO.
ARCHITECTURAL DETAILS		A-12