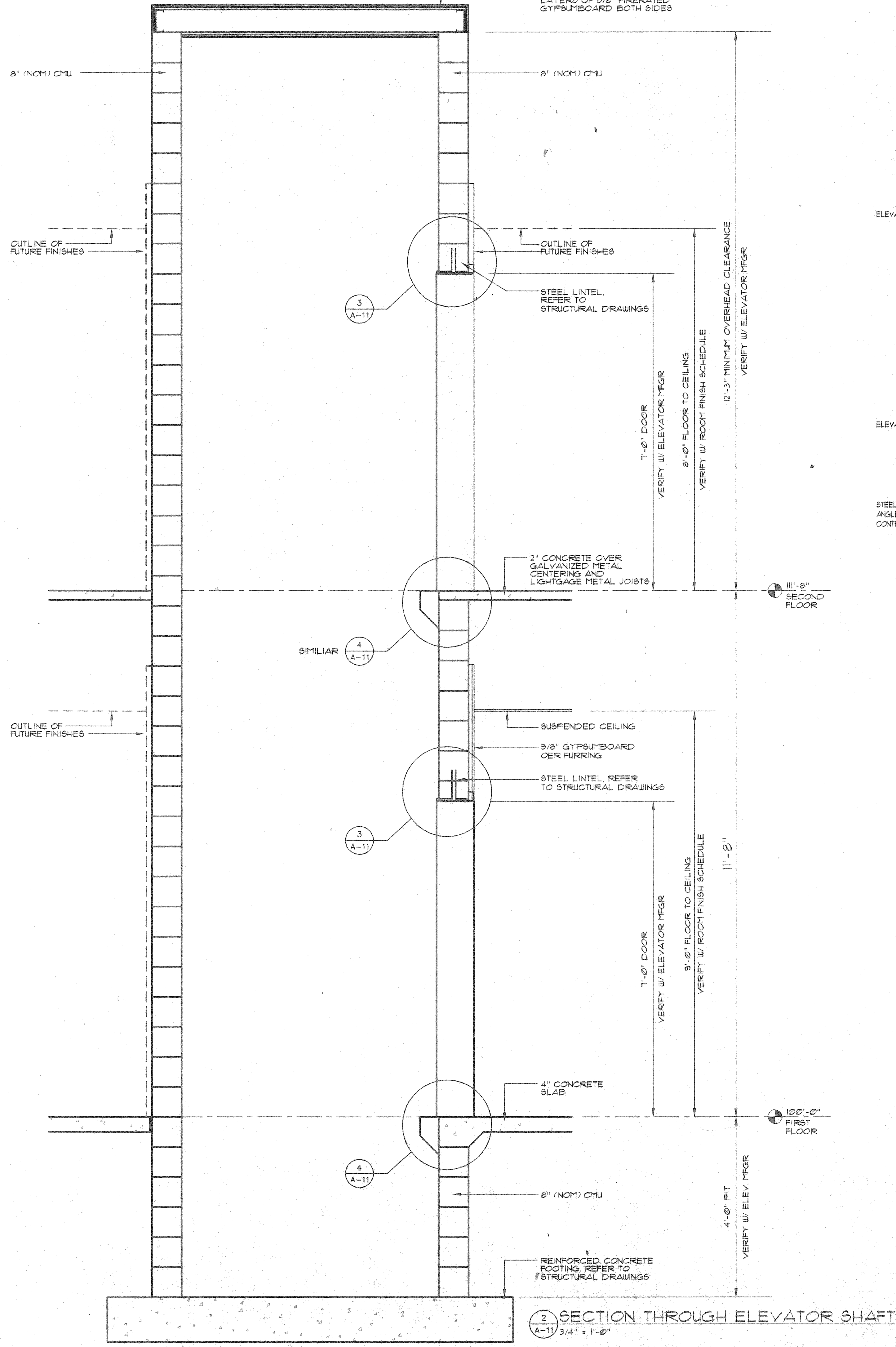
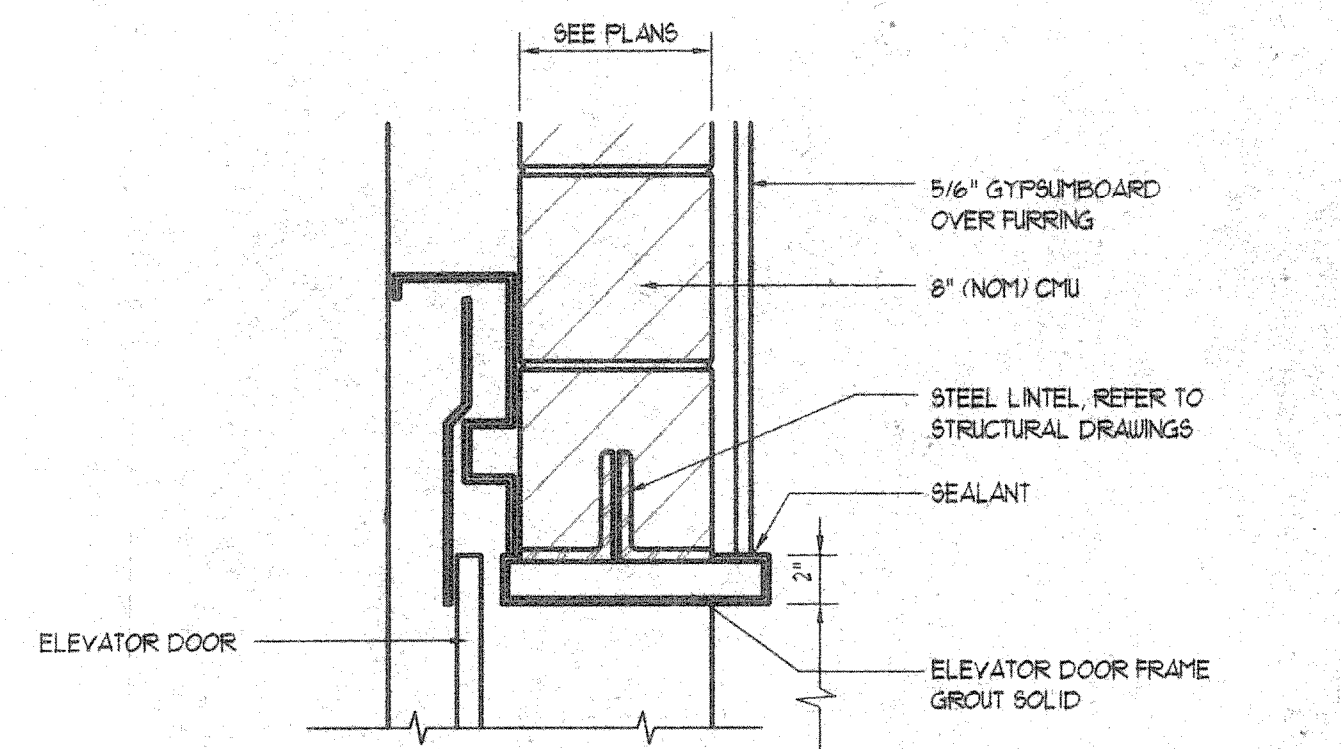


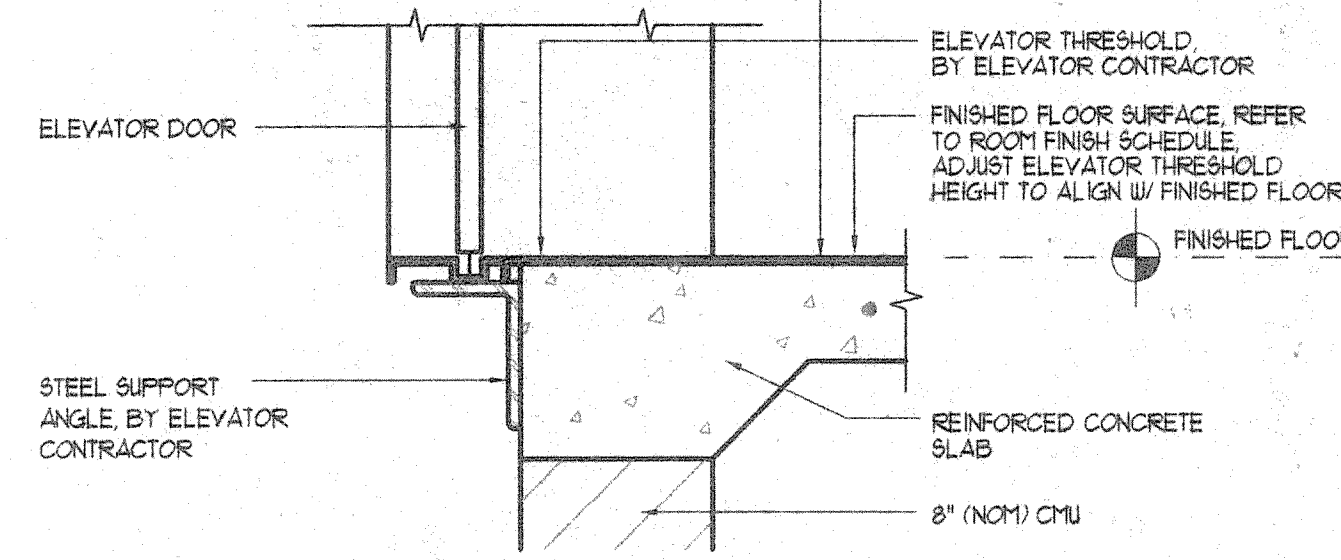
1 PORCH SECTION
A-11 3/4" = 1'-0"



2 SECTION THROUGH ELEVATOR SHAFT
A-11 3/4" = 1'-0"



3 ELEVATOR DOOR HEAD DETAIL
A-11 1/2" = 1'-0"



4 ELEVATOR THRESHOLD DETAIL
A-11 1/2" = 1'-0"

This drawing and the material appearing herein, constitute the original and unpublished work of Feinknopf Macioce Schappa Architects, Inc. and may not be used on any project for any purpose, nor may the same be copied (except by those governmental agencies required by law), or disclosed without written consent of the architect.

© COPYRIGHT FEINKNOPF MACIOCE SCHAPPA, ARCHITECTS, INC. 1995

PROJECT #	95062-01	PROJECT MANAGER	DLAB
DATE	7-11-1996	DRAWN BY	MMP
SCALE	AS NOTED	REVIEWED BY	DLAB

NOTES

NO.	REVISION DESCRIPTION	DATE
-----	----------------------	------

**FEINKNOPF
MACIOCE
SCHAPPA**
Architects, Inc.

274 Maroon Boulevard, Columbus, Ohio 43215
tele (614) 221-5192 fax (614) 221-6601

JASONWAY MEDICAL
OFFICE BUILDING