

SYMBOL LEGEND			
	INDICATES WALL CONSTRUCTION TYPE, REFER TO THIS SHEET FOR DETAILED ASSEMBLY DESCRIPTIONS		TYPICAL SECTION AND DETAIL FLAGS:
	INDICATES ROOM NAME AND NUMBER, REFER TO ROOM FINISH SCHEDULE		REFERS TO SECTION OR ELEVATION NUMBER
	INDICATES DOOR TYPE(S) - REFER TO DOOR SCHEDULE		REFERS TO DRAWING SHEET NUMBER
			INDICATES WINDOW TYPE(S) - REFER TO SHEET A13 FOR WINDOW ELEVATIONS
			FLAG NOTE
			INDICATES EXISTING INTERIOR WALL
			INDICATES NEW WALL (SEE WALL TYPES)

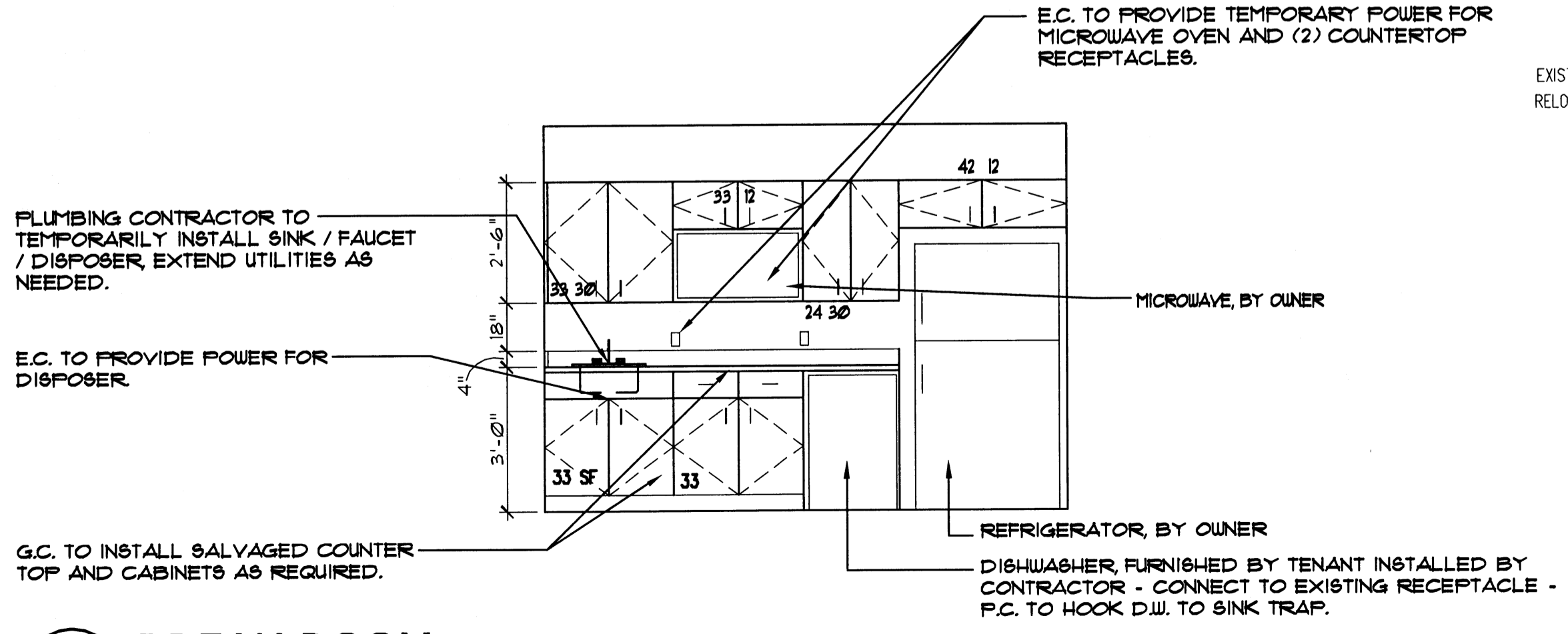
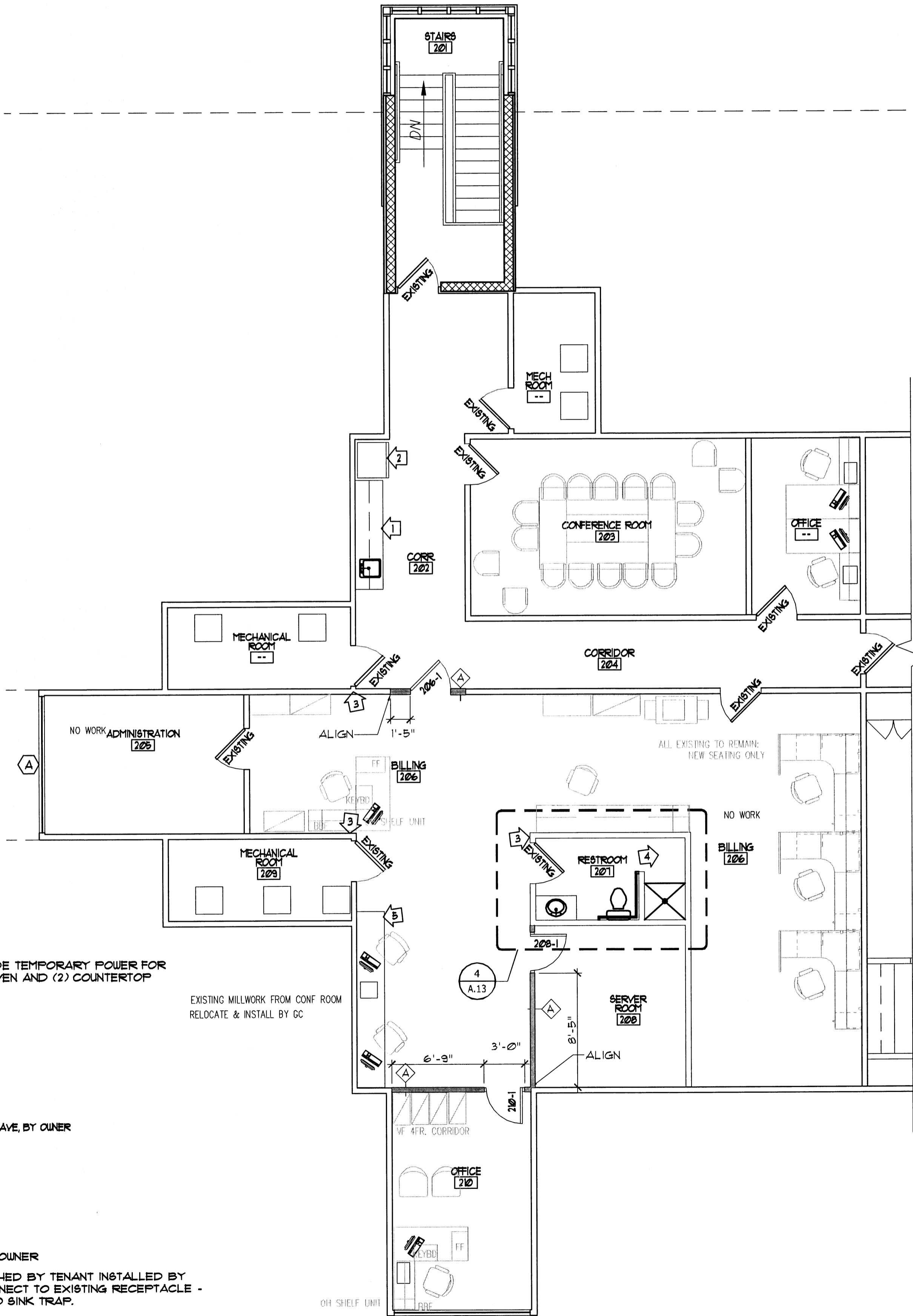
- ### GENERAL PLAN NOTES
- ALL INTERIOR PARTITION DIMENSIONS ARE FROM THE FACE OF FINISHED GYPSUM BOARD TO FACE OF FINISHED GYPSUM BOARD, AND FACE OF EXISTING WALLS, UNLESS NOTED OTHERWISE.
 - VERIFY ALL DIMENSIONED CONDITIONS IN THE FIELD. WHEN DIMENSIONS AND/OR CONDITIONS AS INDICATED ON THE DRAWINGS CONFLICT WITH ACTUAL, CONTACT THE ARCHITECT FOR CLARIFICATION.
 - ALL METAL STUDS SHALL BE 3/8" DEPTH, UNO. BRACE AS REQUIRED FOR LATERAL SUPPORT.
 - WALL THICKNESS INDICATED ON FLOOR PLAN(S) SHALL BE CONSTANT FOR THE ENTIRE LENGTH OF WALL (UNO.)
 - PROVIDE BEHIND WALL REINFORCING AND BLOCKING AS REQUIRED FOR BEHIND DOOR STOPS, ATTACHMENT OF MILLWORK, CABEWORK, TOILET ACCESSORIES, ETC. - WOOD BLOCKING MUST BE FRTUL.
 - ALL EXTERIOR CORNERS THROUGHOUT SPACE TO HAVE METAL CORNER BEADS.

- ### WALL TYPE LEGEND
- INTERIOR PARTITION - 3/8" METAL STUDS (22 GAGE) AT 16" O.C. WITH 1/2" TYPE 'X' GYP. BOARD ON EACH SIDE OF WALL, EXTEND WALL TIGHT TO DECK ABOVE.
 - INTERIOR PARTITION - 48" HIGH - 3/8" METAL STUDS WITH 1/2" GYPSUM BOARD EACH SIDE WITH 2x6 WOOD CAP FINISH.
 - INTERIOR PARTITION - 6" METAL STUDS (22 GAGE) AT 16" O.C. WITH 1/2" TYPE 'X' GYP. BOARD ON EACH SIDE OF WALL, EXTEND WALL TIGHT TO DECK ABOVE.
 - EXISTING EXTERIOR WALL - TO REMAIN - REMOVE PAINT, DEBRIS, ABANDONED COMPONENTS AND HARDWARE, PATCH AND REPAIR AS REQUIRED. IN THE INTERIOR SIDE OF WALL, APPLY 1/2" METAL FURRING AT 16" O.C. WITH 1/2" GYPSUM BOARD.
 - EXISTING INTERIOR WALL - TO REMAIN - REMOVE PAINT, DEBRIS, ABANDONED COMPONENTS AND HARDWARE, PATCH AND REPAIR AS REG.
- NOTE J: FIREBLOCKING SHALL BE PROVIDED IN CONCEALED SPACES OF STUD WALLS AND PARTITIONS, INCLUDING FURRING SPACES, AT THE CEILING AND THE FLOOR LEVEL. PER OBC 1112.2

ROOM TAG NOTE

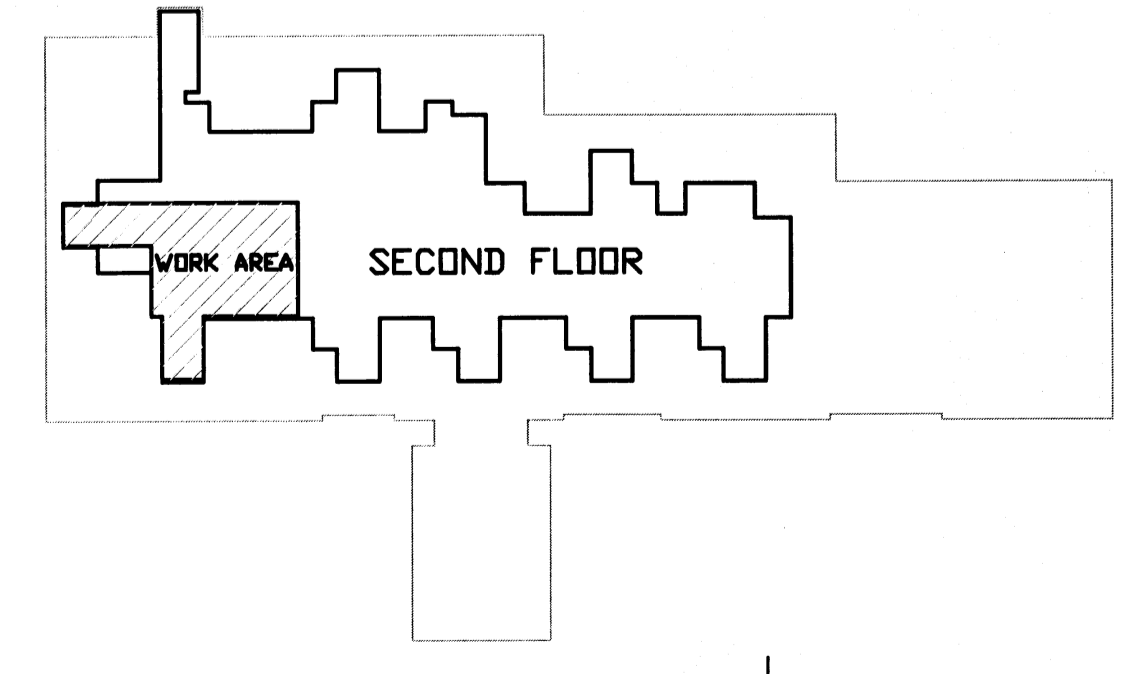
ROOM TAGS WITHOUT NUMBERS DENOTED THAT THESE ROOMS ARE TO REMAIN UNCHANGED.

- ### FLAG NOTES
- C.M. TO REINSTALL EXISTING KITCHENETTE SALVAGED FROM BREAK ROOM. PLUMBING/ELECTRIC CONNECTION WORK REQUIRED. - SEE DETAIL V4.6.
 - RELOCATED EXISTING REFRIGERATOR FROM FORMER KITCHENETTE.
 - REPAIR WALL WHERE PERPENDICULAR WALL WAS REMOVED.
 - EXISTING RESTROOM - REFER TO ROOM FINISH SCHEDULE.
 - COUNTERTOP AND CABINETS RELOCATED FROM CONFERENCE ROOM - SEE SHEET D.3.

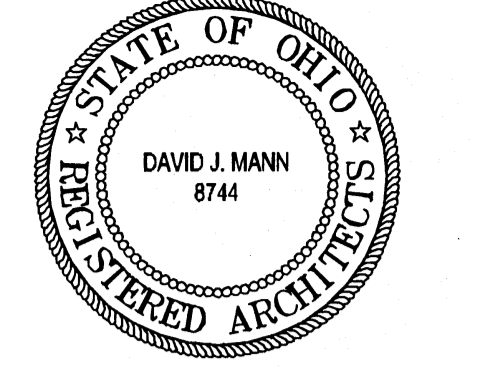


1 BREAK ROOM
A.6 SCALE: 3/8" = 1'-0" 210

PARTIAL SECOND FLOOR PLAN
SCALE: 3/16" = 1' - 0"

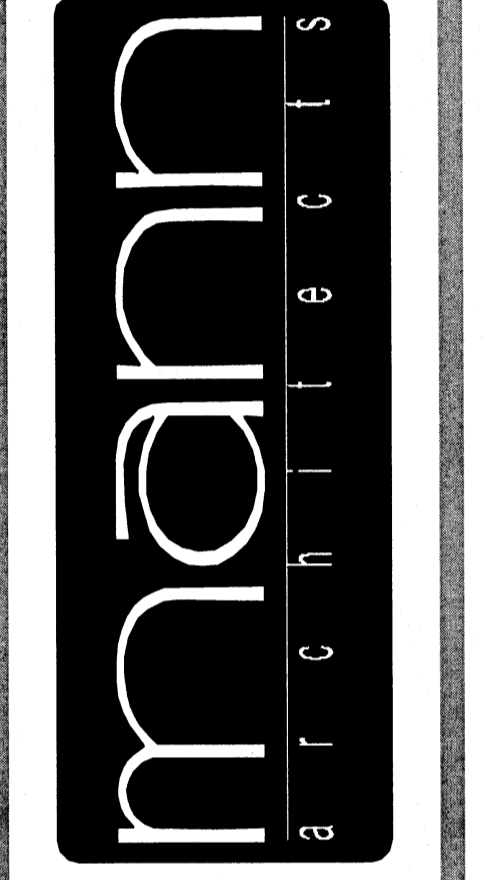


KEY PLAN
N.T.S.



revisions

3660 embassy parkway
akron, ohio 44333
tel. 330.666.5770
fax. 330.666.8812
web site www.mann-architects.com



drawing
PARTIAL SECOND FLOOR PLAN
project no. 1406
date OCTOBER 23, 2007
scale AS NOTED
COLUMBUS ONCOLOGY
JASONIAT PROFESSIONAL BUILDING
810 JASONIAT AVENUE, SUITE A
COLUMBUS, OHIO 43214-2395

A.6
OF 18
sheet no.