

REVISIONS

10/23/07	ADDENDUM #1
11/23/07	ADDENDUM #4
12/19/07	BULLETIN #1
01/07/08	BULLETIN #2
01/23/08	BULLETIN #3

3660 embassy parkway  
akron, ohio 44333  
tel. 330.666.5770  
fax. 330.666.8812  
web site www.mann-architects.com



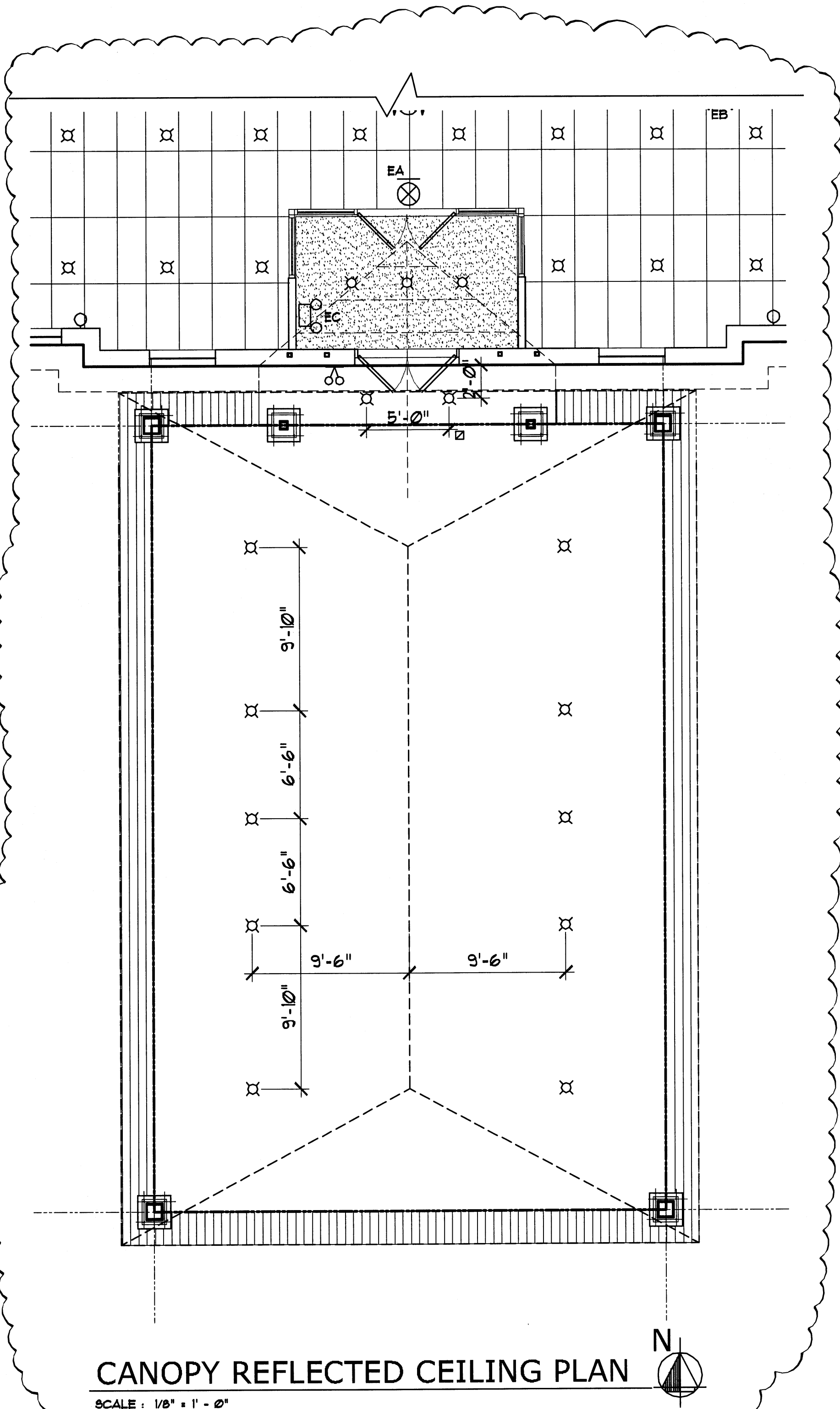
drawing  
PARTIAL 2ND FLOOR REFL. CLG.  
project no. 11406  
date OCTOBER 23, 2007  
scale AS NOTED  
COLUMBUS ONCOLOGY  
JASONIAY PROFESSIONAL BUILDING  
810 JASONIAY AVENUE SUITE A  
COLUMBUS, OHIO 43214-2325

GENERAL REFLECTED CEILING PLAN NOTES

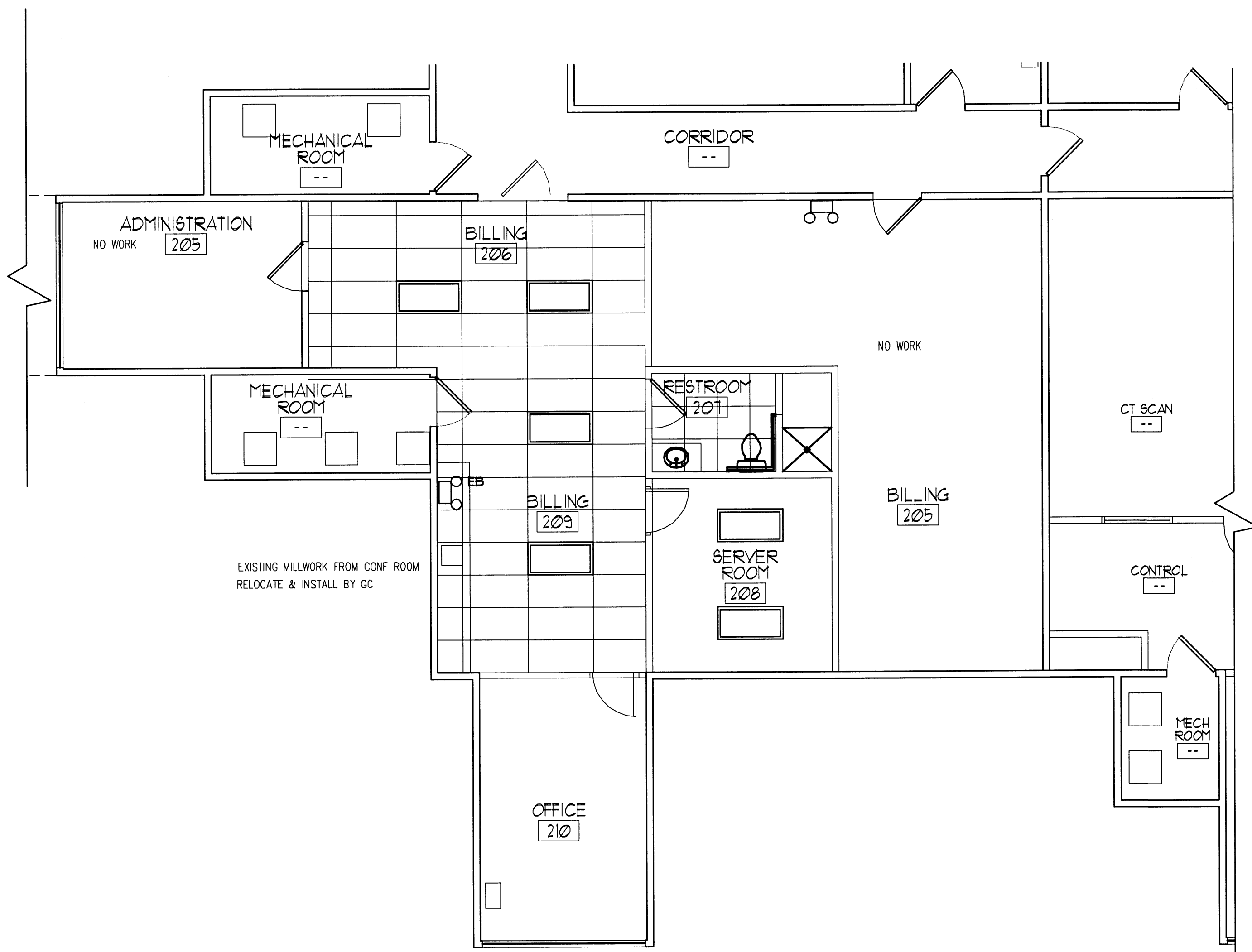
- CENTERLINES OF ROOM SHALL BE STARTING POINT OF CEILING GRID LAYOUT, UNLESS NOTED OTHERWISE.
- SPRINKLER HEADS, INCANDESCENT DOWNLIGHTS, DIFFUSERS, ETC. SHALL BE CENTERED IN CEILING PANELS IN BOTH DIRECTIONS, UNLESS OTHERWISE INDICATED.
- ALL SOFFITS AND VERTICAL SURFACES CONNECTING CEILING AND/OR SOFFITS AT DIFFERENT ELEVATIONS SHALL BE CONSTRUCTED OF 3/8" METAL STUDS (22 GAGE) AT 16" O.C. W/ 1/2" GYP. BD. (TYPE 'X'), UNO.
- ALL ELECTRICAL AND MECHANICAL DEVICES SHOWN ON REFLECTED CEILING PLANS ARE FOR GRAPHICAL REPRESENTATION ONLY. SEE ELECTRICAL AND MECHANICAL SHEETS FOR FURTHER INFORMATION.

LEGEND (REFER TO ELECTRICAL DRAWINGS FOR FURTHER INFORMATION)

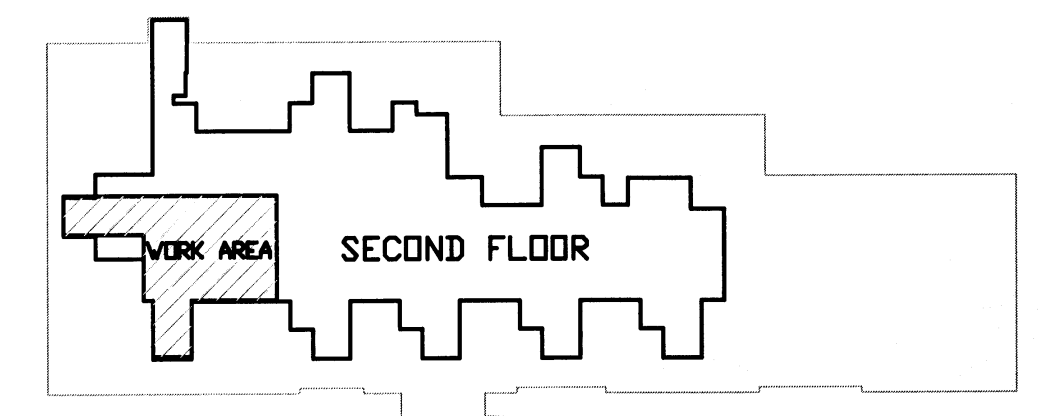
	FLUOR, 2x2, RECESSED INDIRECT, PERF BASKET
	FLUOR, 2x4, RECESSED INDIRECT, PERF BASKET, OR FLUOR, 2x4, PRISMATIC, RECESSED, 2 BALLASTS
	FLUOR, 1x4, SURFACE WRAP
	OVER MIRROR LIGHT, TOILETS, DECORATIVE
	WALL SCONCE
	COMPACT FLUOR, RECESSED, SUSPENDED ELEMENT
	PENDANT MOUNTED, MONO-POINT
	1x4 SURFACE STRIP
	CURVABLE TRACK
	EXIT, LED, BATTERY
	BATTERY LIGHT UNIT
	2 HEADS W/ 2 WP. REMOTE HEADS
	BATTERY LIGHT, RECESSED
	HVAC SUPPLY GRILL
	HVAC RETURN GRILL
	EXHAUST FAN



CANOPY REFLECTED CEILING PLAN  
SCALE: 1/8" = 1' - 0"



PARTIAL SECOND FLOOR REFLECTED CEILING PLAN  
SCALE: 3/16" = 1' - 0"



KEY PLAN  
SCALE: N.T.S.