

FLAG NOTES

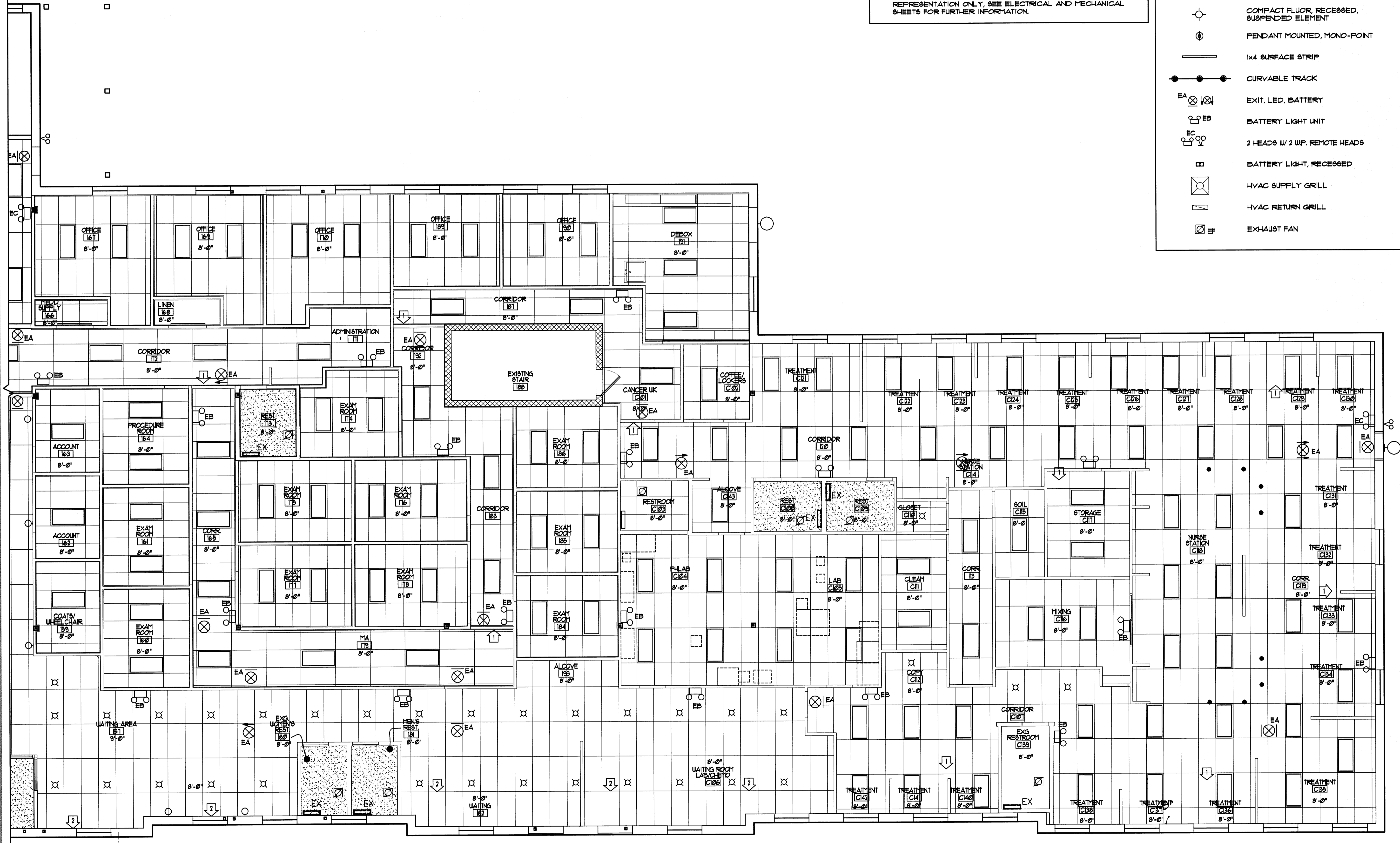
◁ DENOTES EXISTING 3 5/8" MTL. STUD HEADER W/ GYP. BD. FINISH - 1" BELOW PROPOSED ADJACENT LAY-IN CEILING PLANE.

GENERAL REFLECTED CEILING PLAN NOTES

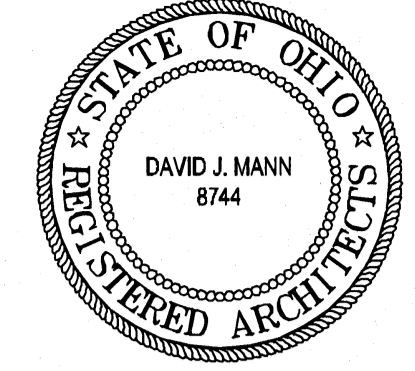
1. CENTERLINES OF ROOM SHALL BE STARTING POINT OF CEILING GRID LAYOUT, UNLESS NOTED OTHERWISE.
2. SPRINKLER HEADS, INCANDESCENT DOWNLIGHTS, DIFFUSERS, ETC. SHALL BE CENTERED IN CEILING PANELS IN BOTH DIRECTIONS, UNLESS OTHERWISE INDICATED.
3. ALL SOFFITS AND VERTICAL SURFACES CONNECTING CEILING AND/OR SOFFITS AT DIFFERENT ELEVATIONS SHALL BE CONSTRUCTED OF 3 1/2" METAL STUDS (22 GAUGE) AT 16" O.C. W/ 1/2" GYP. BD. (TYPE 'X'), U.N.O.
4. ALL ELECTRICAL AND MECHANICAL DEVICES SHOWN ON REFLECTED CEILING PLANS ARE FOR GRAPHICAL REPRESENTATION ONLY. SEE ELECTRICAL AND MECHANICAL SHEETS FOR FURTHER INFORMATION.

LEGEND (REFER TO ELECTRICAL DRAWINGS FOR FURTHER INFORMATION)

- FLUOR. 2x2, RECESSED INDIRECT, PERF BASKET
- FLUOR. 2x4, RECESSED INDIRECT, PERF BASKET, OR FLUOR. 2x4, PRISMATIC, RECESSED, 2 BALLASTS
- FLUOR. 1x4, SURFACE WRAP
- OVER MIRROR LIGHT, TOILETS, DECORATIVE
- WALL SCONCE
- COMPACT FLUOR. RECESSED, SUSPENDED ELEMENT
- PENDANT MOUNTED, MONO-POINT
- 1x4 SURFACE STRIP
- CURVABLE TRACK
- EXIT, LED, BATTERY
- BATTERY LIGHT UNIT
- 2 HEADS W/ 2 WP. REMOTE HEADS
- BATTERY LIGHT, RECESSED
- HVAC SUPPLY GRILL
- HVAC RETURN GRILL
- EXHAUST FAN

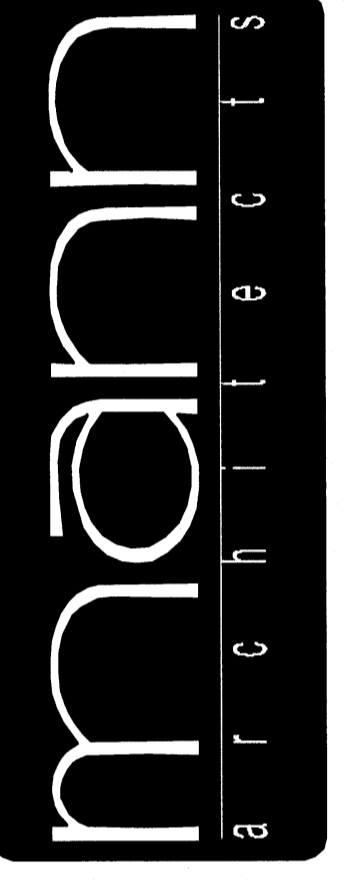


FIRST FLOOR REFLECTED CLG. PLAN - EAST
SCALE: 3/16" = 1' - 0"



REVISIONS

3660 embassy parkway
akron, ohio 44333
tel. 330.666.5770
fax. 330.666.8812
web site www.mann-architects.com



drawing 1ST FLOOR REFL. CLG. PLAN - EAST
project no. 11406
date OCTOBER 23, 2007
scale AS NOTED
AS NOTED
COLUMBUS ONCOLOGY
JACOBWAY PROFESSIONAL BUILDING
810 JACOBWAY AVENUE, SUITE A
COLUMBUS, OHIO 43214-2328

A.17
OF 18
sheet no.