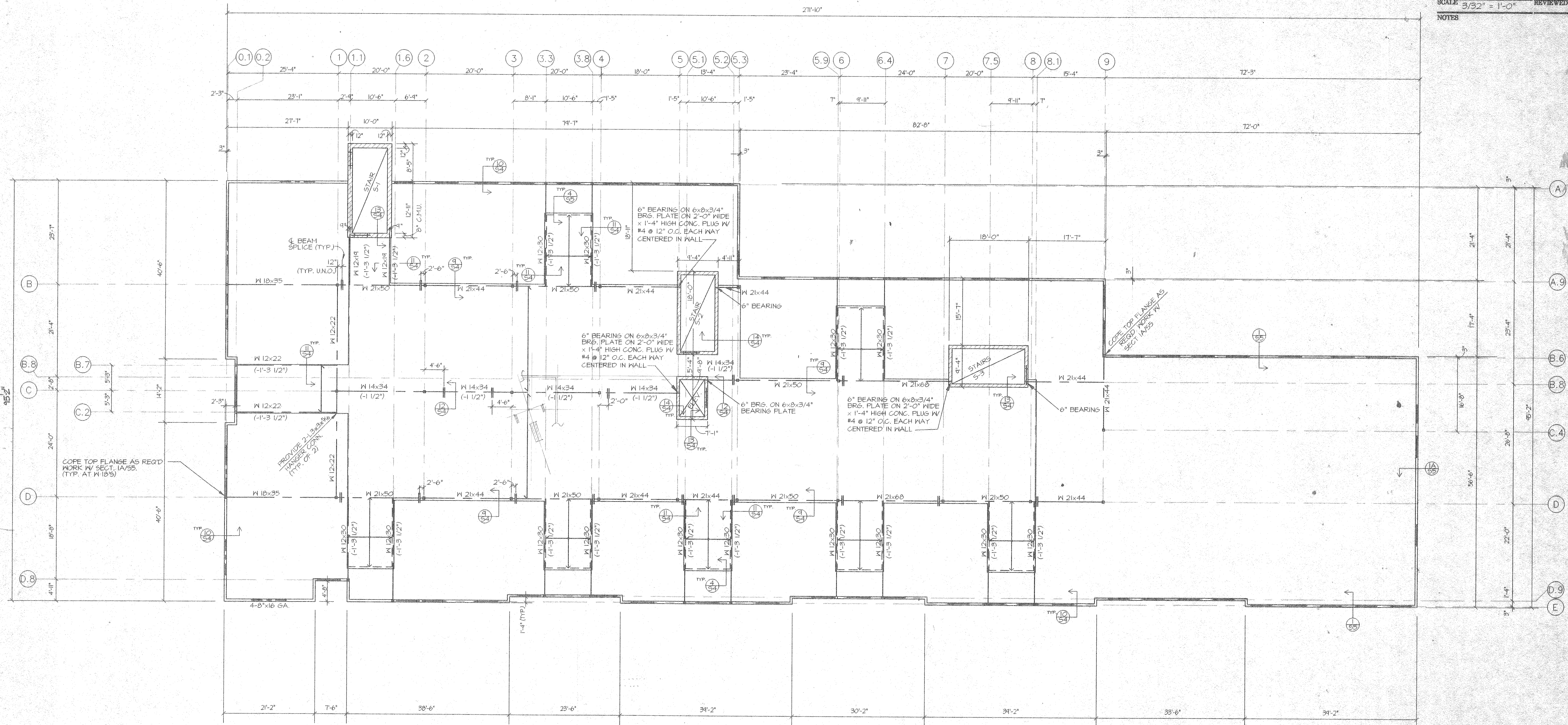




This drawing and the material appearing herein, constitute the original and unpublished work of Feinknopf Macioce Schappa Architects, Inc. and may not be used on any project for any purpose, nor may the same be copied (except by those governmental agencies required by law), or disclosed without written consent of the architect.

© COPYRIGHT FEINKNOPF MACIOCE SCHAPPA, ARCHITECTS, INC.
 PROJECT # _____ PROJECT MANAGER _____
 DATE 7-15-96 DRAWN BY _____
 SCALE 3/32" = 1'-0" REVIEWED BY _____
 NOTES _____



SECOND FLOOR FRAMING PLAN NOTES

- COORDINATE ALL DIMENSIONS WITH ARCHITECTURAL DRAWINGS. SEE ARCHITECTURAL DRAWINGS FOR DIMENSIONS NOT SHOWN.
- FLOOR CONSTRUCTION: 2 INCHES OF CONCRETE FILL (REINFORCED WITH 6x6-WI.4MI.4 W/F) ON 3/16" DEEP X 20 GA. METAL FLOOR CENTERING ON 14" DEEP X 12 GA. GALVANIZED LIGHTGAGE METAL JOISTS SPACED AT 16 INCHES O.C. ON STRUCTURAL STEEL FRAMING SHOWN.
- ALL MASONRY IS 8 INCH C.M.U. (7-5/8 INCH ACTUAL) UNO.
- ALL INTERIOR COLUMNS ARE TO BE T5 4X4X5/16 WITH 3/4 INCH CAP PLATE AND 10 X 10 X 1 BASE PLATE WITH (4) 3/4 INCH DIAMETER ANCHOR BOLTS EMBEDDED 4 INCHES.
- ALL COLUMNS IN EXTERIOR WALLS ARE TO BE T5 3X3X1/4 WITH 1/2 INCH CAP PLATE AND 10 X 5 X 5/8 BASE PLATE WITH (2) 1/2 INCH DIAMETER ANCHOR BOLTS EMBEDDED 16 INCHES, TYP. UNO.
- UNLESS NOTED OTHERWISE, PROVIDE HEADERS OVER ALL OPENINGS AS FOLLOWS: (4) 6" DEEP X 10 GA. (2 PAIRS, EA. PAIR NESTED) WITH 2 BEARING STUDS EA. END AND 1 FULL HEIGHT STUD EA. END, (2) FULL HEIGHT STUDS EA. END OF OPENINGS WIDER THAN 4'-0". SEE ARCHITECTURAL DRAWINGS FOR OPENING SIZES AND LOCATIONS.
- ALIGN LIGHTGAGE JOISTS WITH SUPPORTING LIGHTGAGE STUDS (WEB OF JOIST TO ALIGN WITH WEB OF STUD).
- TOP OF STEEL ELEVATION (T/STL) = 111'-7" UNLESS NOTED THIS: +/-.
- TOP OF SLAB ELEVATION (T/STL) = 111'-8" UNLESS NOTED THIS: +/-.
- SEE STRUCTURAL NOTES ON SHEET S5.
- AT STAIR S-1, GROUT SOLID TOP COURSE OF 12" C.M.U. AND STARTING COURSE OF 8" C.M.U., SEE ARCH. FOR LOCATION/ELEVATION.

A SECOND FLOOR FRAMING PLAN

3/32" = 1' - 0"

NO.	REVISION DESCRIPTION	DATE

**FEINKNOPF
MACIOCE
SCHAPPA**
Architects, Inc.

274 Marconi Boulevard, Columbus, Ohio 43215
 tele (614) 221-3192 fax (614) 221-5601

JOB
 JASONWAY
 MED OFFICE

SHEET TITLE SHEET NO.
 SECOND FLOOR
 FRAMING PLAN 52

